



Document 24-1512

Book 2024 Page 1512 Type CORNR Pages 1  
Date 4/22/2024 Time 1:48 PM  
Rec Amt \$7.00

NAOMI ELLIS, RECORDER  
MARION COUNTY IOWA

GARDEN & ASSOC.

P.O. Box 451, Oskaloosa, Iowa 52577-0451 Phone: (641)672-2526

UNITED STATES PUBLIC LAND SURVEY CORNER CERTIFICATE OF

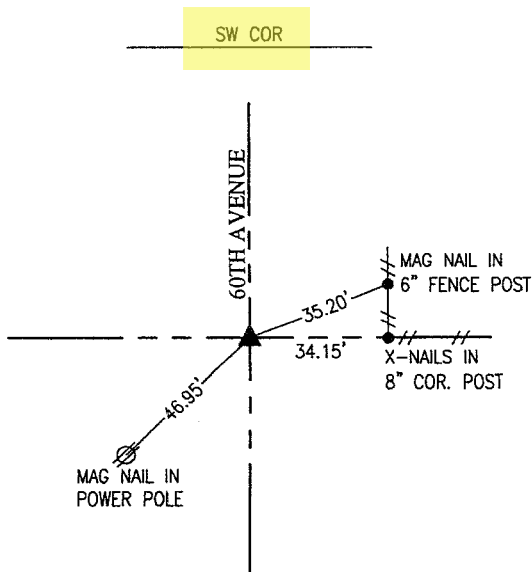
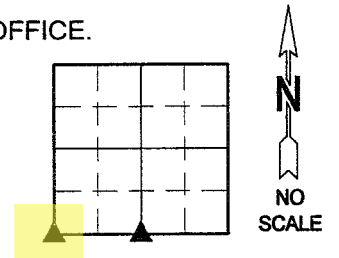
LAND SURVEY MONUMENTS SITUATED IN SECTION 1, TOWNSHIP 76, RANGE 21,  
OF THE FIFTH PRINCIPAL MERIDIAN, MARION COUNTY, IOWA.

PREVIOUSLY RECORDED IN \_\_\_\_\_ IN COUNTY RECORDER'S OFFICE.

MONUMENT DESCRIPTION AND REMARKS:

SEE BELOW

SW CORNER BOOK 1 PAGE 274

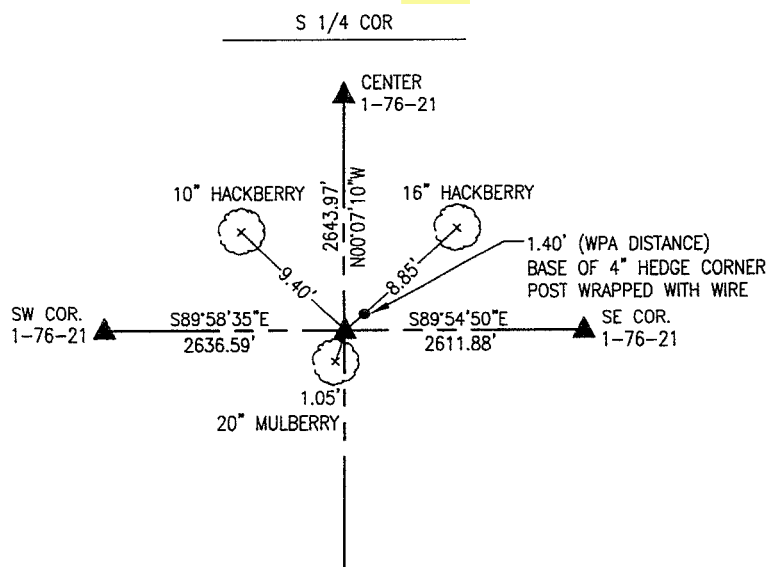


MARCH 27, 1996:

PLS #3321 SET 1/2" REBAR FROM OLD TIES.

MARCH 28, 2024:

FOUND 1/2" REBAR WITH YPC #3321. SEVERAL TIES FROM 1996 WERE GONE. RE-TIED.



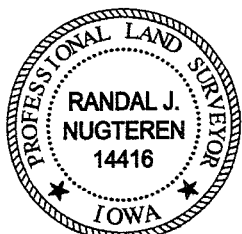
APRIL 5, 2024:

FOUND OLD 4" HEDGE CORNER POST WRAPPED WITH WIRE. SEARCHED EXTENSIVELY FOR SANDSTONE AND CONCRETE MONUMENT NEAR HEDGE CORNER POST PER WPA TIES. DUG AND PROBED AROUND AND UNDER TREE ROOTS 18" DEEP. UNABLE TO LOCATE SANDSTONE OR CONCRETE MONUMENT. SET 5/8" X 30" REBAR USING WPA DISTANCE FROM BASE OF OLD HEDGE CORNER POST.

I hereby certify that this land surveying document was prepared and the related survey work was performed by me or under my direct personal supervision and that I am a duly licensed Professional Land Surveyor under the laws of the State of Iowa.

LIST CORNERS TO BE INDEXED

CORNERS	SECTION	TOWNSHIP	RANGE
SW COR	1	76	21
S 1/4 COR	1	76	21



*Randal J. Nugteren* April 16, 2024  
Randal J. Nugteren, P.L.S. Date  
License number: 14416  
My license renewal date is December 31, 2024

pd #702 ck - Rest Garden Env.

Found Lime Rock 7"x6"x4"  
 over 4" Drilled hole 3' Deep  
 Filled with Conc. & Rock  
 Right where we set c.m.

set c.m. over 1-2 1/2" D. pipe standing  
 on END.

Rock TOP c.m.

c.m. 12" Below Surface.

N.E. Cor 11-76-21  
 set - 5-21-41  
 Notes - Kennedy  
 Party - Luther - Salsberry

