



GARDEN & ASSOC.

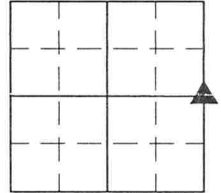
P.O. Box 451, Oskaloosa, Iowa 52577-0451 Phone: (641)672-2526

KAREN SCHWANEBECK, RECORDER
MARION COUNTY IOWA

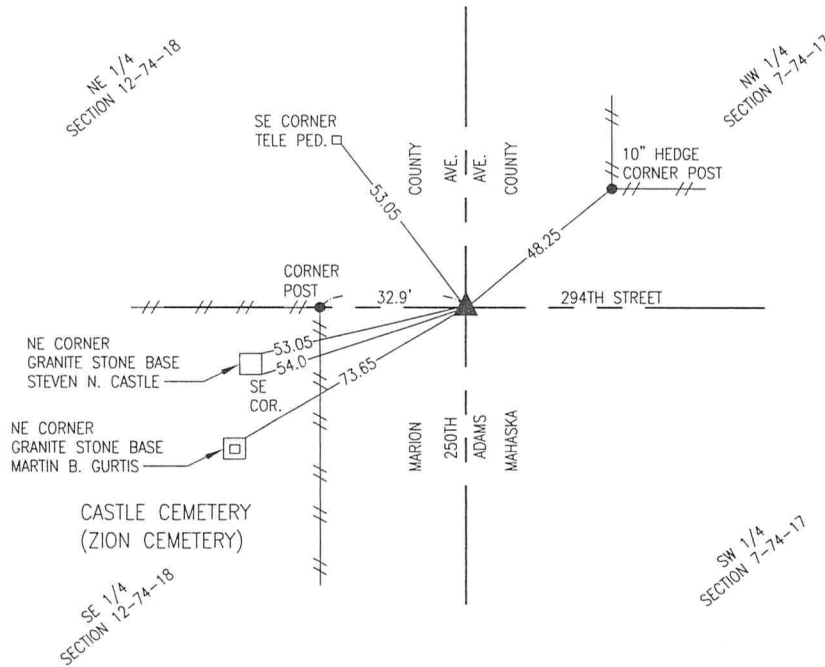
UNITED STATES PUBLIC LAND SURVEY CORNER CERTIFICATE

OF

Land Survey Monuments situated in Section 12, Township 74, Range 18, of the Fifth Principal Meridian, MARION County, Iowa. Previously recorded in _____ in County Recorder's Office. Monument Description and Remarks: SEE BELOW



E 1/4 CORNER



FOUND 1/2" REBAR 0.6' DEEP OVER C.M. IN CL COUNTY ROADS N-S-E FROM MARION COUNTY ENGINEER TIES.

I hereby certify that this land surveying document was prepared and the related survey work was performed by me or under my direct personal supervision and that I am a duly licensed Professional Land Surveyor under the laws of the State of Iowa.

Gary Wayne Keith 14 Oct 2021
Gary Wayne Keith, P.L.S. Date
License number: 11420
My license renewal date is December 31, 2022

SEAL



List Corners to be Indexed			
Corners	Section	Township	Range
E 1/4 CORNER	12	74	18

Pd #7^{se} CK - Ret Garden & Assoc Env.

E 1/4 Cor. 12 T. 74N R. 18W

Found Granite Rock 6" x 6" x 2"
and 2-2" horseshoe tile

Set C.M. over 2-2" tile (horiz.) and
Granite rock on top of C.M.

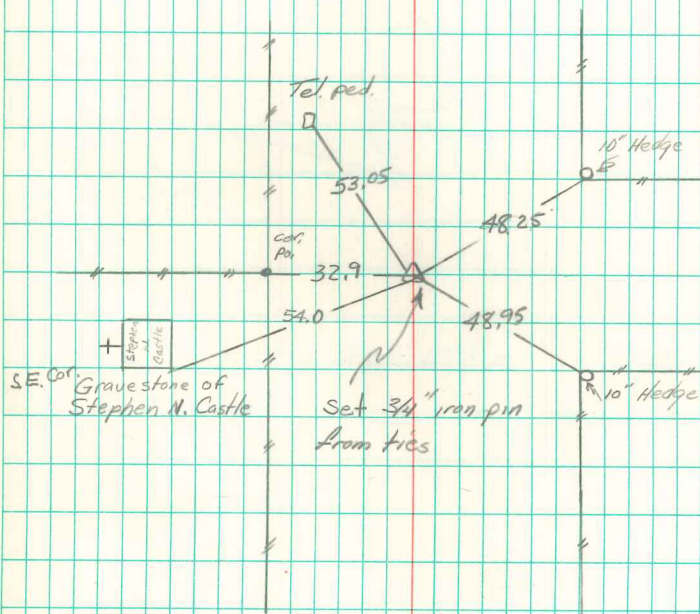
E 1/4 Cor. 12 T. 74N R. 18W

Set 12-19-39

By Ray Wandell
and Party

N

12 7



Revised 4/10/95
Abie Davis