

UNITED STATES PUBLIC LAND SURVEY CORNER CERTIFICATE OF

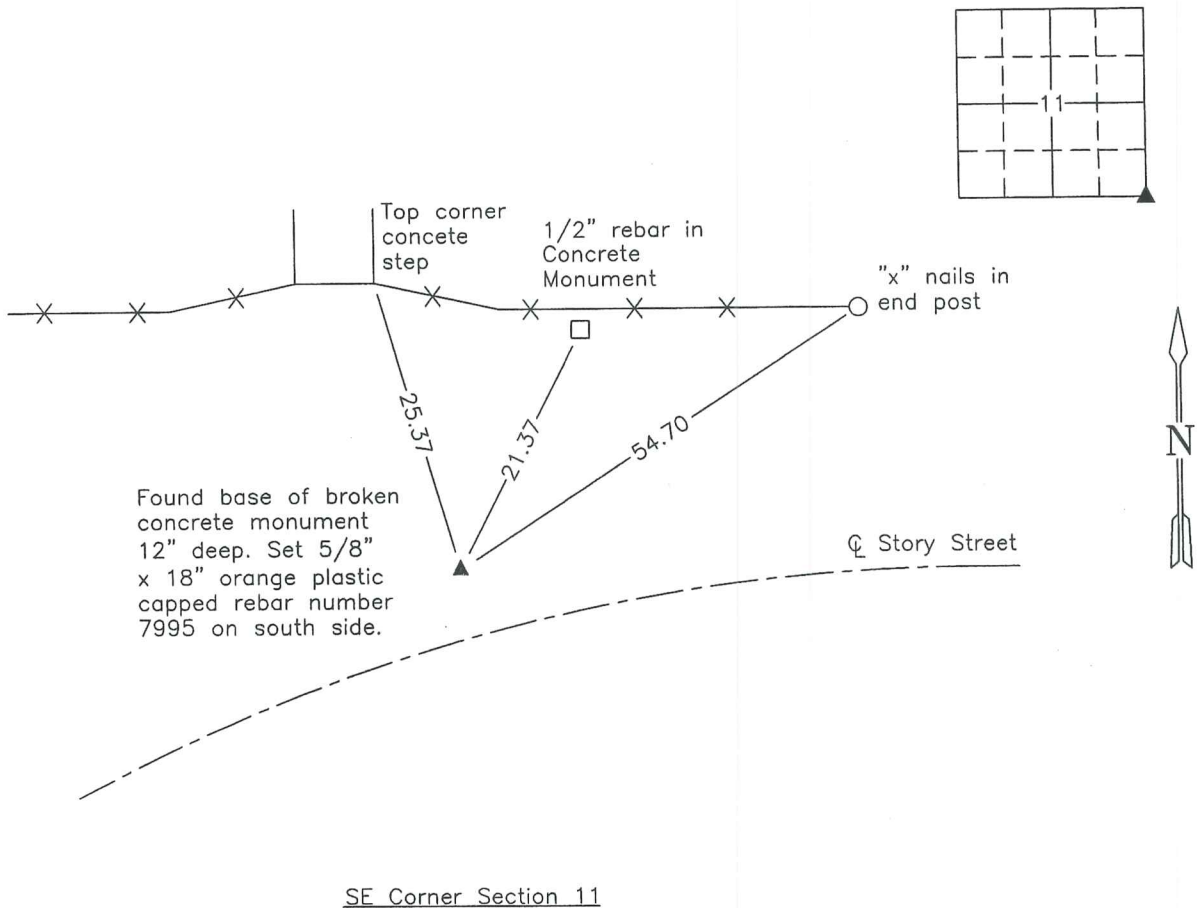
Land Survey Monuments situated in Section 11, Township 74N, Range 18W, of the Fifth Principal Meridian, Marion County, Iowa.
Previously recorded in Bk. 1, P. 336 in County Recorders Office.
(book, page, document number, etc.)

(Show reason for preparing this certificate, the evidence and detailed procedures used in establishing the corner positions and monumentation found or placed.)

Monument Description and Remarks: Found base of broken WPA concrete monument 12" deep with 4" x 8" shale rock on north side of monument. Base surrounded by remnants of red shale rock. Set 5/8" x 18" orange plastic capped rebar number 7995 on north side of concrete monument.
This corner was used to establish the E. 1/4 Corner of Sec. 11 for a Plat of Survey for Parcel A in the SE 1/4 of the SE 1/4 of Sec. 11.

PLAN VIEW

(Show a minimum of three reference ties to durable physical objects, relevant monuments and physical conditions that will enable recovery of the corner.)



NOTE: ALL TIES TO BRASS DISK UNLESS NOTED.



I hereby certify that this land surveying document was prepared and the related survey work was performed by me or under my direct personal supervision and that I am a duly Licensed Land Surveyor under the laws of the state of Iowa.

Signature: J. Brian Morrissey Date: 12/30/14
J. Brian Morrissey

License number 7995.

My license renewal date is December 31, 2015

767-14-3

NE. Cor. 14, T-74N R-18W

Found 3" tile Conc. filled

Set C.M. over 3" tile and placed
Red shale rock 6"x8"x12" on Top of C.M.

NE. Cor. 14 T-74N R-18W

Set 6-9-39

By

41

