

E 1/4 Cor. 15 T-74N R-18W

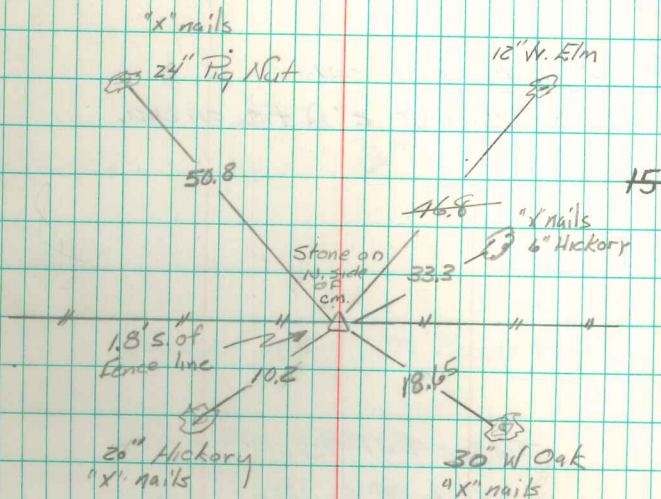
Found Stone and 2-2" round Tile

Set C.M. Flush with surface
due to solid rock. Stone and 1-2"
round tile on north side of C.M.

E 1/4 Cor. 15 T-74N R-18W

Set 12-15-39

By Moon, Harger, Ogden & Eddinger



Found & Retied
6/24/1987