

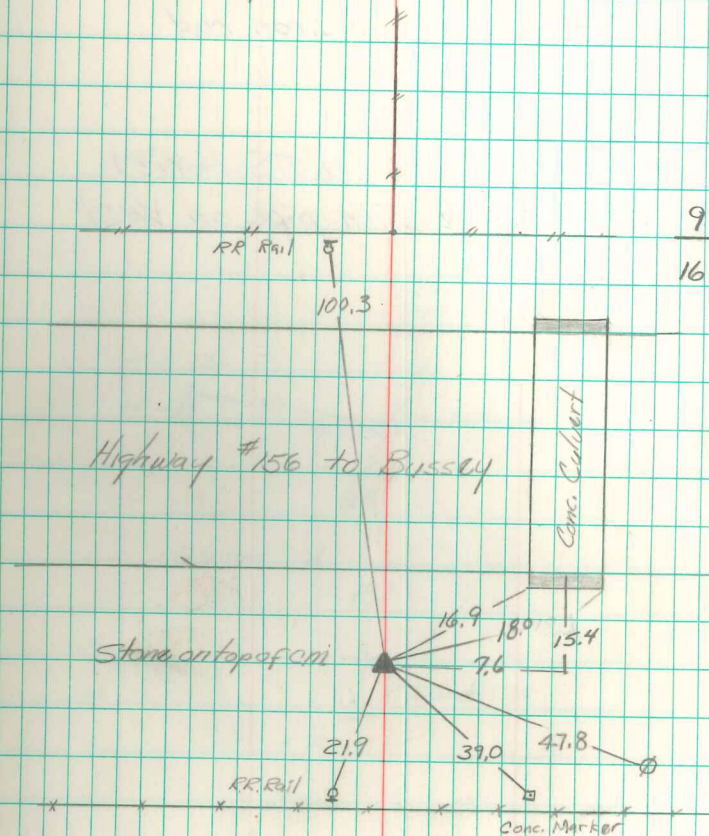
Found conc. stake and a pine  
stake over a limestone 14" x 9" x 4"  
laying down.

Set C.M. over some pieces  
of coal. Stakes on N. side C.M.  
stone on top. Top of C.M. 12" Deep.

NE. Cor. 16 T-74N R-18W

Set 6-9-41

Dr. Notes Wignall



1/2" iron pin 4" deep  
over Conc Mon. 19" deep  
3/23/92 Abie Davis