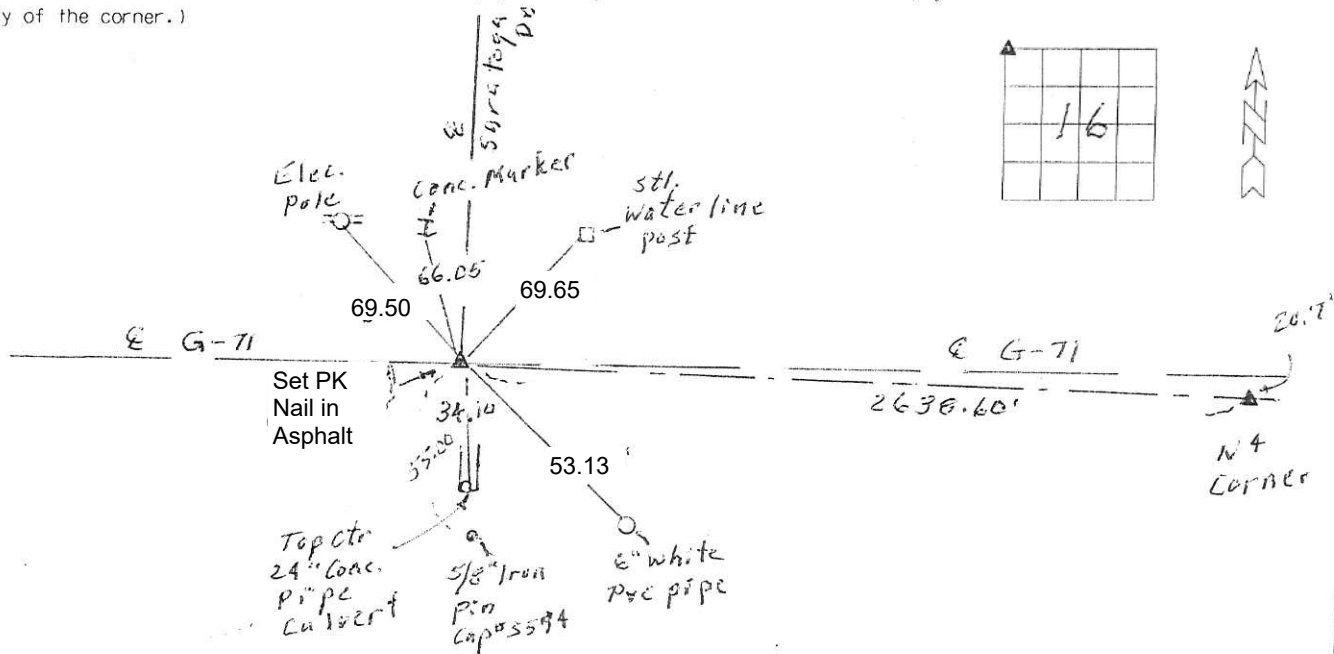


# PLAN - VIEW

(Show a minimum of three reference ties to durable physical objects, relevant monuments and physical conditions that will enable recovery of the corner.)



Retied  
7-10-2023  
Schipers  
& Hatch



Document 19-1045

Book 2019 Page 1045 Type CORNR Pages 1  
Date 4/02/2019 Time 10:16 AM  
Rec Amt \$7.00

KAREN SCHWANEBECK, RECORDER  
MARION COUNTY IOWA

Prepared by Abie C. Davis, P.E. & L.S., 1428 Oregon St., Knoxville, IA 50138 (641) 842-5863

# UNITED STATES PUBLIC LAND SURVEY CORNER CERTIFICATE OF

Land survey Monuments situated in Section 16, Township 74N, Range 18W, of the Fifth Principal Meridian, Marion County, Iowa.

Previously recorded in N/A in County Records Office.

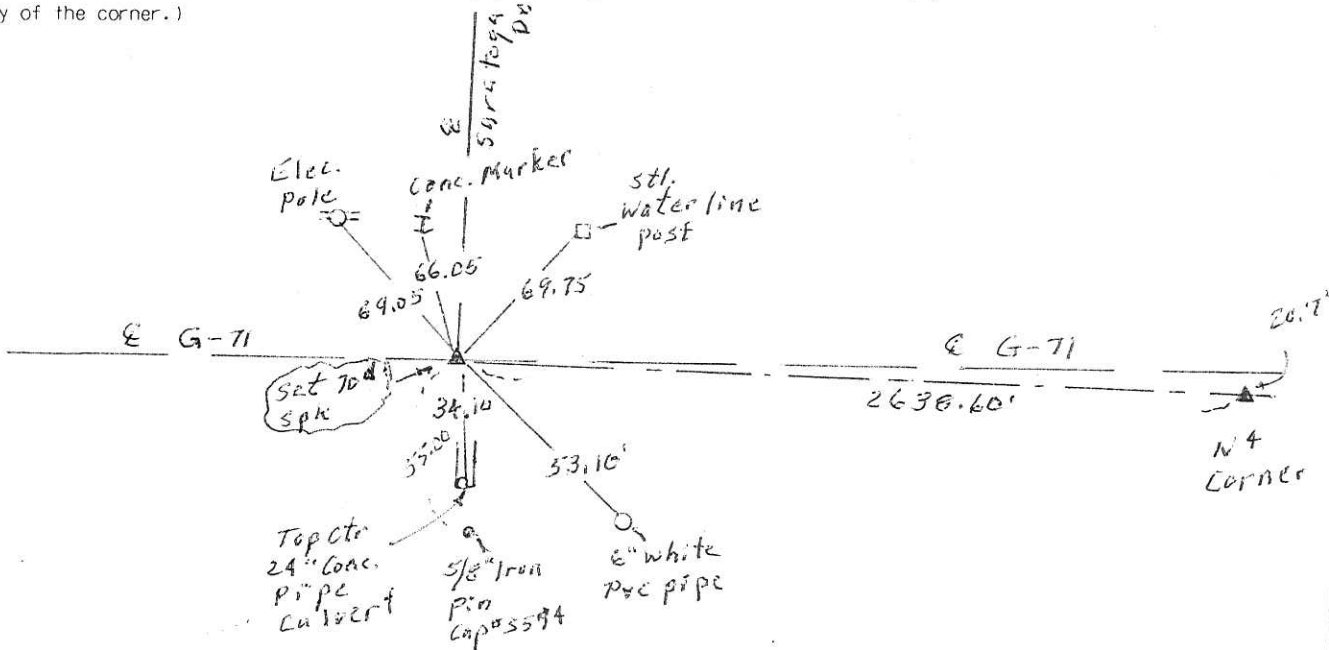
Show reason for preparing this certificate, the evidence and detailed procedures used in establishing the corner positions and monumentation found or placed (book, page, document number, etc.)

Monument Description and Remarks: Set corner from info. on IA D.O.T. road plans and R.O.W. strip for Proj. # 753 for former state Hwy #156 dated 1931. Set 70" Spk on E. asphalt pmt.



## PLAN - VIEW

(Show a minimum of three reference ties to durable physical objects, relevant monuments and physical conditions that will enable recovery of the corner.)



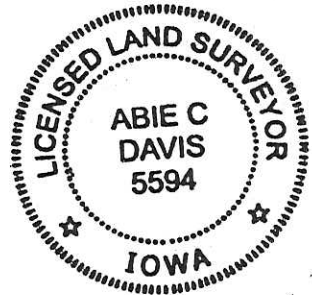
I hereby certify that the survey work was completed and this land surveying document was prepared by me or under my direct personal supervision and that I am a duly licensed land surveyor under the laws of the state of Iowa

Signature: Abie C Davis

Date: 3/30/19 Abie C. Davis, P.E. & L.S. Reg. No. 5594

My license renewal date is December 31, 2019

SEAL



Corners	Section	Twp	Range
NW	16	74N	18W

Ad \$700 Cash - Ret Abie Davis

Set C.M. over 1-2" D tile

N.E. Cor 17-74-18

Set 6-9-41

Notes - Kennedy

Party - Wells - Burrus & Glass

