



Document 24-1152

Book 2024 Page 1152 Type CORNR Pages 1

Date 3/28/2024 Time 12:50 PM

Rec Amt \$7.00

NAOMI ELLIS, RECORDER  
MARION COUNTY IOWA

PREPARED BY: CARTER SURVEYING & CONSTRUCTION SERVICES, LLC - 8755 NE 27TH AVE - ALTOONA, IA 50009 515-343-6756

# UNITED STATES PUBLIC LAND SURVEY CORNER CERTIFICATE OF:

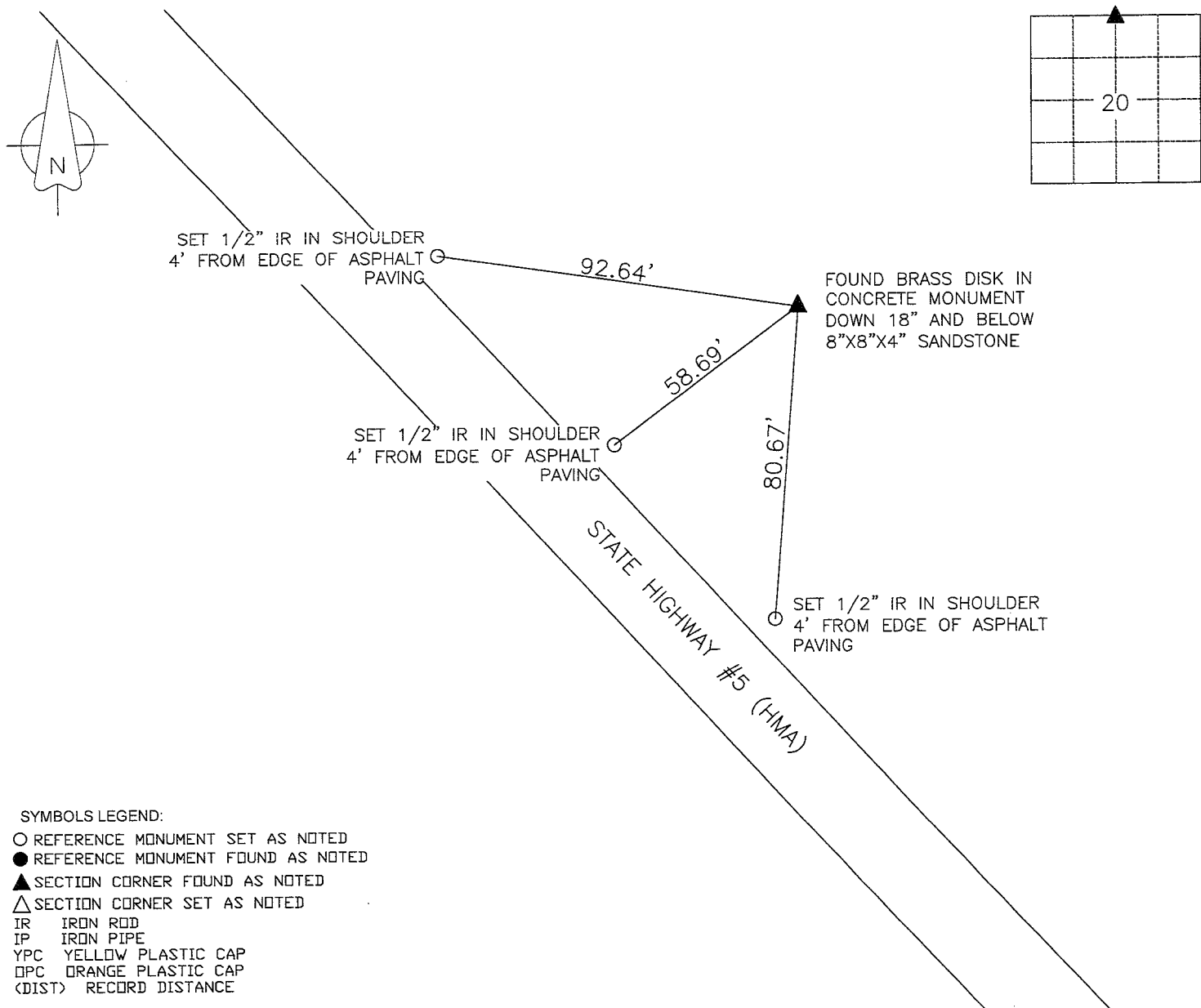
LAND SURVEY MONUMENTS SITUATED IN SECTION 20, TOWNSHIP 74 NORTH, RANGE 18 WEST, OF THE FIFTH PRINCIPAL MERIDIAN, MARION COUNTY, IOWA.

CORNER CERTIFICATE PREVIOUSLY RECORDED IN MARION COUNTY ENGINEER'S RECORDS.

MONUMENT DESCRIPTION AND REMARKS: TIES FROM COUNTY ENGINEER'S RECORDS NO LONGER EXIST IN THE FIELD. LOCATION OF SECTION CORNER WAS APPROXIMATED BASED ON 1930'S PAVING AND GRADING PLANS FOR STATE HIGHWAY #5. FOUND A BRASS DISK IN CONCRETE MONUMENT, APPROXIMATELY 18" BELOW GRADE, LYING BELOW AN 8"X8"X4" SANDSTONE AS NOTED IN THE COUNTY ENGINEER'S RECORDS.

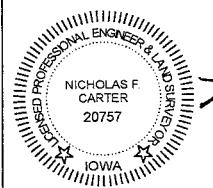
## PLAN VIEW

(SHOW A MINIMUM OF THREE REFERENCE TIES TO DURABLE PHYSICAL OBJECTS, RELEVANT MONUMENTS AND PHYSICAL CONDITIONS THAT WILL ENABLE RECOVERY OF THE CORNER)



- SYMBOLS LEGEND:
- REFERENCE MONUMENT SET AS NOTED
  - REFERENCE MONUMENT FOUND AS NOTED
  - ▲ SECTION CORNER FOUND AS NOTED
  - △ SECTION CORNER SET AS NOTED
  - IR IRON ROD
  - IP IRON PIPE
  - YPC YELLOW PLASTIC CAP
  - OPC ORANGE PLASTIC CAP
  - (DIST) RECORD DISTANCE

DRAWN DATE: 11/12/2023  
DRAWN BY: N CARTER  
PAGE 1 OF 1



I HEREBY CERTIFY THAT THIS LAND SURVEYING DOCUMENT WAS PREPARED AND THE RELATED SURVEY WORK WAS PERFORMED BY ME OR UNDER MY DIRECT PERSONAL SUPERVISION AND THAT I AM A DULY LICENSED PROFESSIONAL LAND SURVEYOR UNDER THE LAWS OF THE STATE OF IOWA.

*NFC* 3-25-24  
NICHOLAS F. CARTER, P.L.S. IA LIC NO 20757 DATE  
MY LICENSE RENEWAL DATE IS DECEMBER 31, 2024  
ADDITIONAL PAGES OR SHEETS COVERED BY THIS SEAL (NONE UNLESS INDICATED HERE):

CORNERS TO BE INDEXED:

SECTION	TOWNSHIP	RANGE	CORNER
20	74	18	N 1/4 COR
17	74	18	S 1/4 COR

Pd #700-CK - Ret Carter Surveying

Dug Hole 8' square by 2' Deep at inter.  
 section of old Established Fence Lines  
 From E, S, & West, & Found No Evidence  
 of Corner.

Re established From Local evidence  
 of old Established F<sub>o</sub> Lines.

set C.M. over 1-2" D tile 1 Foot  
 Below Surface.

8" x 10" x 3" Sandstone top C.M.

N $\frac{1}{4}$  Cor 20-74-18

Set Nov 10-42

Notes: Earl R. Baker

Party - Kennedy - route

