



Document 24-1151

Book 2024 Page 1151 Type CORNR Pages 1

Date 3/28/2024 Time 12:49 PM

Rec Amt \$7.00

NAOMI ELLIS, RECORDER
MARION COUNTY IOWA

PREPARED BY: CARTER SURVEYING & CONSTRUCTION SERVICES, LLC - 8755 NE 27TH AVE - ALTOONA, IA 50009 515-343-6756

UNITED STATES PUBLIC LAND SURVEY CORNER CERTIFICATE OF:

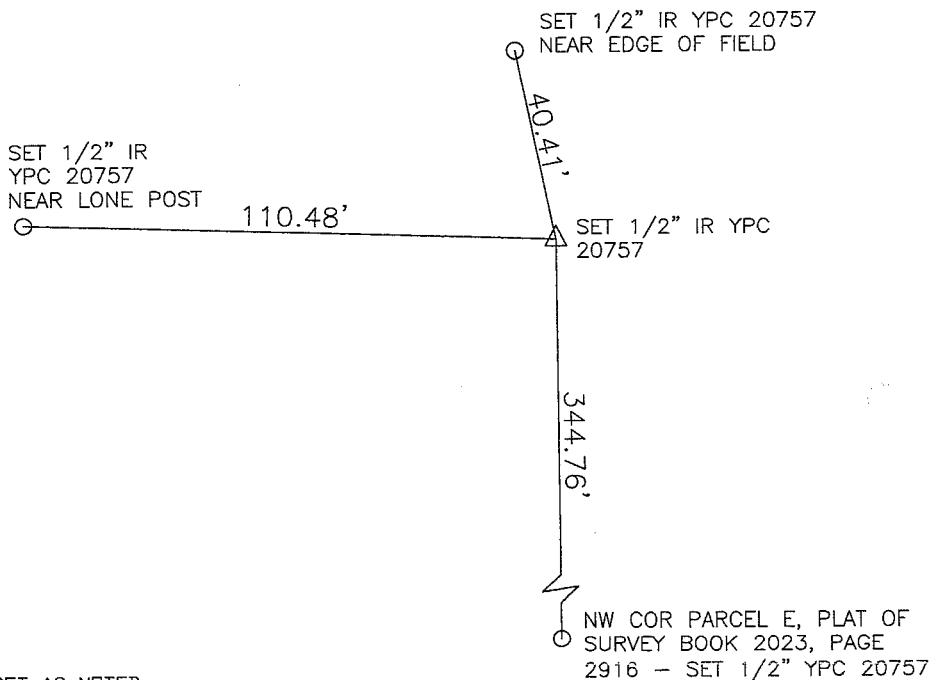
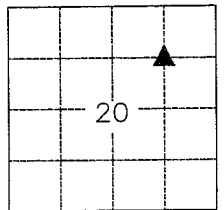
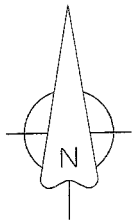
LAND SURVEY MONUMENTS SITUATED IN SECTION 20, TOWNSHIP 74 NORTH, RANGE 18 WEST, OF THE FIFTH PRINCIPAL MERIDIAN, MARION COUNTY, IOWA.

CORNER CERTIFICATE PREVIOUSLY RECORDED IN NO PREVIOUS RECORD

MONUMENT DESCRIPTION AND REMARKS: FOUND REFERENCE MONUMENTS AND ESTABLISHED CENTERLINE OF STATE HIGHWAY #5
BASED ON REFERENCE MONUMENT TIES SHOWN IN IDOT PROJECT STP-5-2(35)--2C-68 DATED 12/4/2006. ALSO USED
1931 IDOT ROADWAY GRADING/PAVING PLANS AND IDOT STRIP MAP F.A. 253C TO CALCULATE THE LOCATION OF THIS SECTION
CORNER BASED ON REFERENCES IN SAID PLANS. SET 1/2" IRON ROD WITH YELLOW IDENTIFICATION CAP #20757

PLAN VIEW

(SHOW A MINIMUM OF THREE REFERENCE TIES TO DURABLE PHYSICAL OBJECTS, RELEVANT MONUMENTS AND PHYSICAL CONDITIONS THAT WILL ENABLE RECOVERY OF THE CORNER)



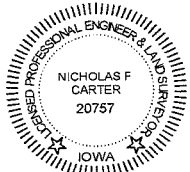
SYMBOLS LEGEND:

- REFERENCE MONUMENT SET AS NOTED
- REFERENCE MONUMENT FOUND AS NOTED
- ▲ SECTION CORNER FOUND AS NOTED
- △ SECTION CORNER SET AS NOTED
- IR IRON ROD
- IP IRON PIPE
- YPC YELLOW PLASTIC CAP
- OPC ORANGE PLASTIC CAP
- (DIST) RECORD DISTANCE

DRAWN DATE: 11/12/2023

DRAWN BY: N CARTER

PAGE 1 OF 1



I HEREBY CERTIFY THAT THIS LAND SURVEYING DOCUMENT WAS PREPARED AND THE RELATED SURVEY WORK WAS PERFORMED BY ME OR UNDER MY DIRECT PERSONAL SUPERVISION AND THAT I AM A DULY LICENSED PROFESSIONAL LAND SURVEYOR UNDER THE LAWS OF THE STATE OF IOWA

Nicholas F. Carter 3-25-24
NICHOLAS F. CARTER, P.L.S. IA LIC. NO. 20757 DATE

MY LICENSE RENEWAL DATE IS DECEMBER 31, 2024

ADDITIONAL PAGES OR SHEETS COVERED BY THIS SEAL (NONE UNLESS INDICATED HERE)

CORNERS TO BE INDEXED:

SECTION	TOWNSHIP	RANGE	CORNER
20	74	18	NW COR, SE 1/4, NE 1/4

Pd #72000k - Ret Carter Surveying