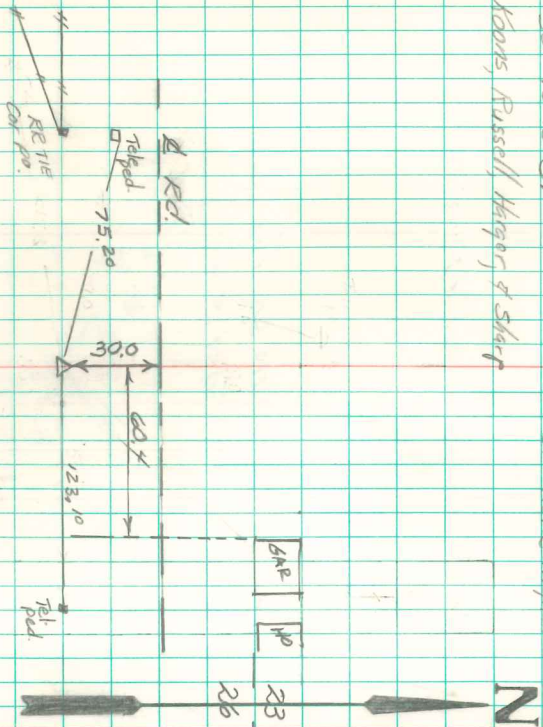


Found $1\frac{1}{2}$ ϕ tile Iron Rod in Center.

Set CM. Stone on S.S. tile on
end at West side,

N $\frac{1}{4}$ Cor 26-74-18
Set 12-13-39
Koons, Russell, Hering & Sharp

D.L. Thomas
Dns. Notes Map 11



End Cor. 15' deep. Set 1" Iron pipe 30" long on So.
side 3" above ground
Abie Davis 2/29/98