

Set C.M. on west side concrete
Cor Post. Bottle on south side
C.M.

Top C.M. 5" Below surface

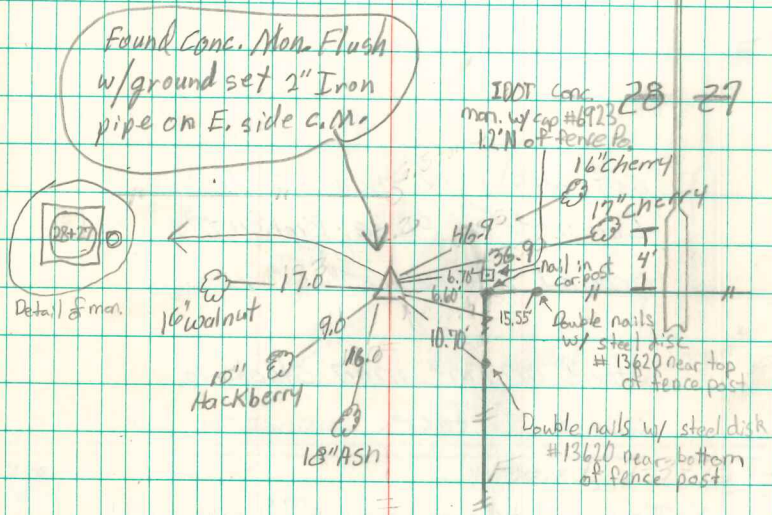
E $\frac{1}{4}$ Cor 28-74-18

Set - 12-18-39

Notes - Kennedy

Party - Koons, Sharp & Edinger

Revised 4/12/99



Retied 2/7/11
David Brown