

Found 6"x8"x10" Brown Painted Sandstone
 over 2-1/2" D tile in vertical position,
 Top of tile 42" below surface, also
 Found several smaller stones & 2 well
 Preserved butter Nuts 3' under surface,
 evidently from orig Gro. white walnut
 Tree, of which we found several
 decayed roots.

Left D tile in their original position

Set C.M. over tile. C.M. 8" Below
 Ground.

Sandstone on top C.M.

2648.0' South of C.M. E 1/4 Cor 30

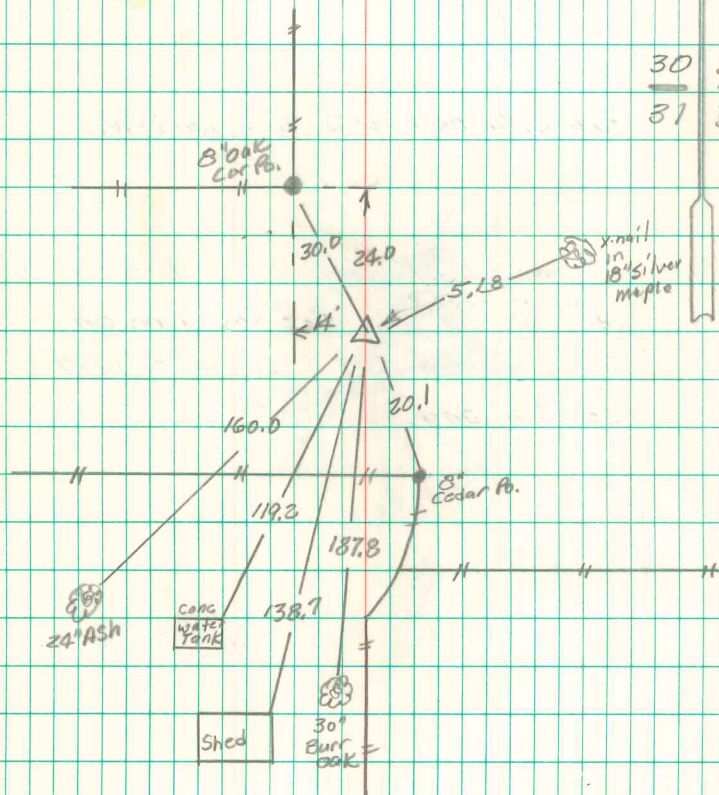
NE. Cor 31-74-18

Set Nov 3-42

Notes: ^{Earl} Barker

Party: Zante

Leo Davis & witnesses
 Irvin Wallace



Revised 12/15/99
 Robert Buss