

UNITED STATES PUBLIC LAND SURVEY CORNER CERTIFICATE

OF

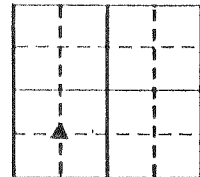
Land Survey Monuments situated in Section 36, Township 74-N, Range 1E-W, of the Fifth Principal Meridian, MARION County, Iowa. Previously recorded in N/A in County Recorder's Office.

(book, page, document number, etc.)

(Show reason for preparing this certificate, the evidence and detailed procedures used in establishing the corner positions and monument found or placed.)

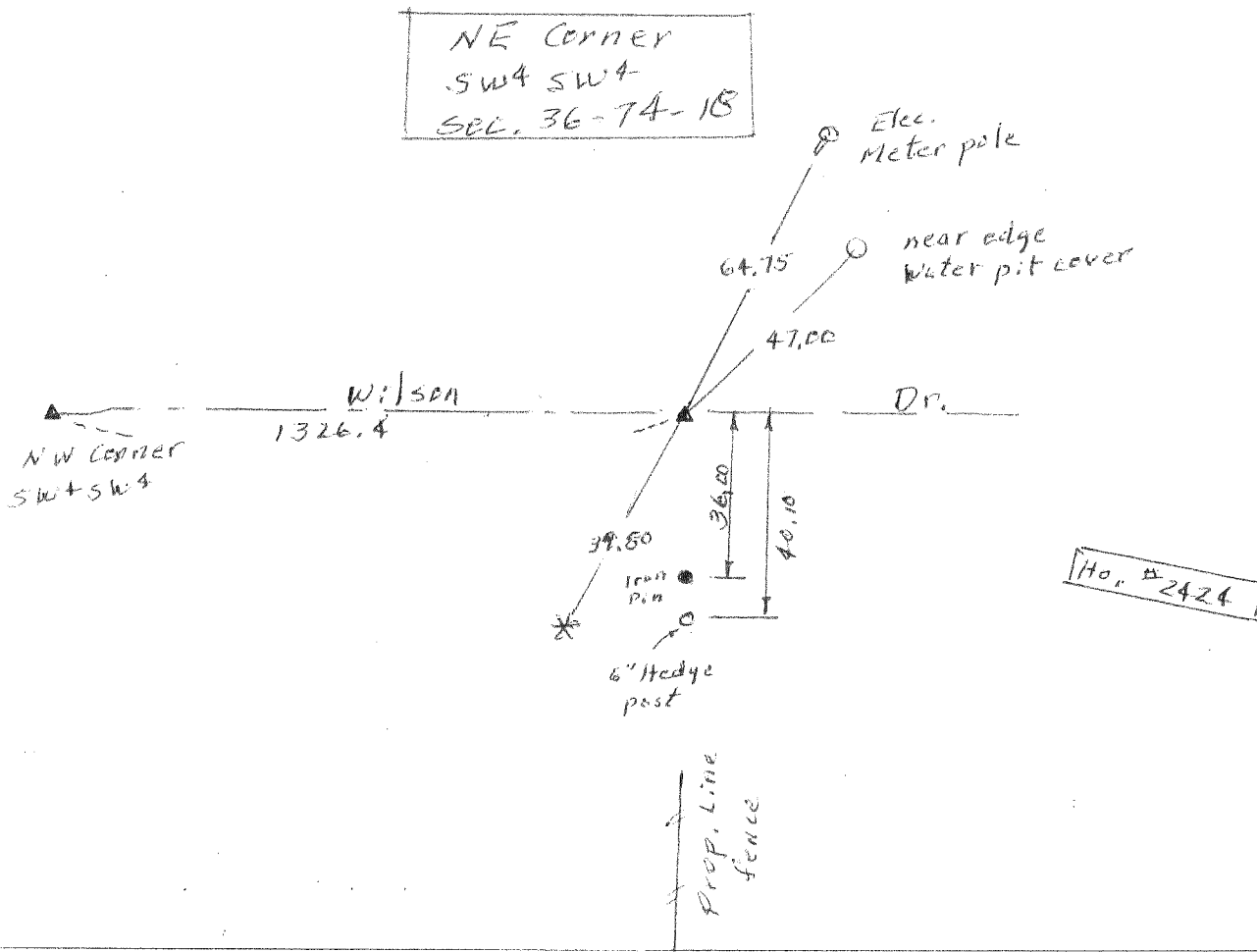
Monument Description and Remarks: Found 5/8" Iron Pin

Cap # 5594



PLAN - VIEW

(Show a minimum of three reference ties to durable physical objects, relevant monuments and physical conditions that will enable recovery of the corner.)



Hor. # 2424

I hereby certify that the survey work was completed and this land surveying document was prepared by me or under my direct personal supervision and that I am a duly licensed land surveyor under the laws of the state of Iowa

Signature: Abie C Davis
Abie C. Davis, P.E. & L.S.

Date: 4/18/14 Reg. No. 5594

My license renewal date is December 31, 2015

List Corners to be Indexed

Corners	Section	Twp	Range
NE Corn. SW4 SW4	36	74N	1E-W

SEAL

