

SW corner NE SE
sec. 6-74-18



N

Set P.K. nail in red stone at surface
of roadway.

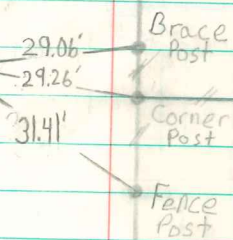


Position located at the mathematical
center of the SE⁴ using found or
established 1/4 corners or 1/4 1/4 corners

6

Set P.K. nail in red
stone at surface
of roadway.

Marion Co. Hwy.



Retied 5/14/11
Brian Morrissey - 7995