

KAREN SCHWANEBECK, RECORDER  
MARION COUNTY IOWA

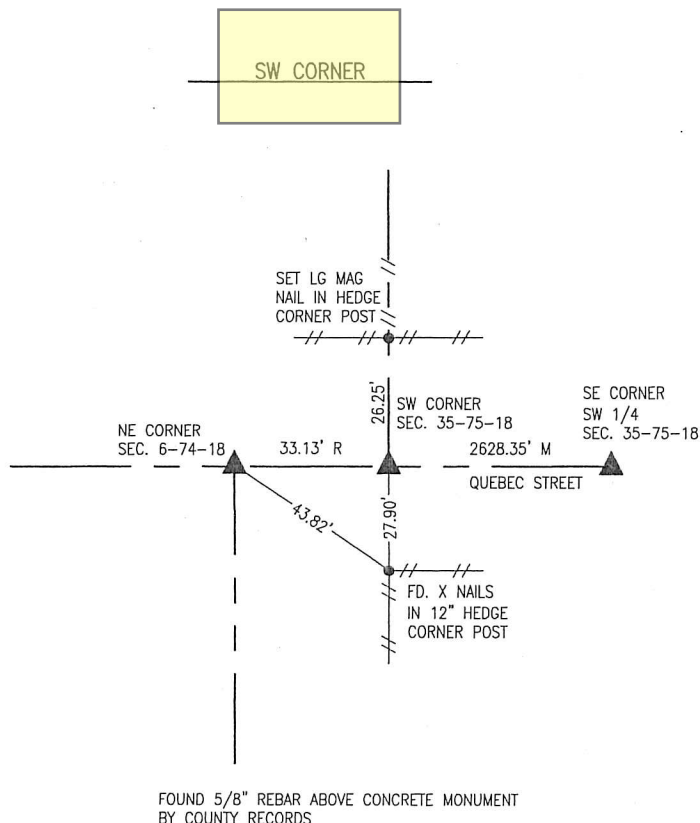
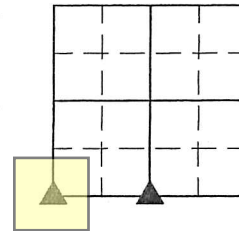


GARDEN & ASSOC. P.O. Box 451, Oskaloosa, Iowa 52577-0451 Phone: (641)672-2526

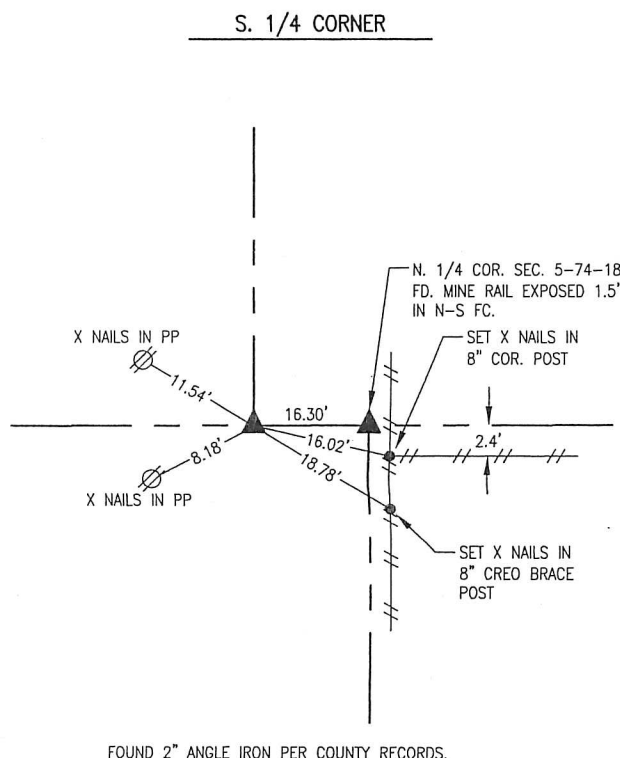
UNITED STATES PUBLIC LAND SURVEY CORNER CERTIFICATE

OF

Land Survey Monuments situated in Section 32, Township 75, Range 18, of the Fifth Principal Meridian, MARION County, Iowa. Previously recorded in N/A in County Recorder's Office. Monument Description and Remarks: SEE BELOW



FOUND 5/8" REBAR ABOVE CONCRETE MONUMENT BY COUNTY RECORDS



FOUND 2" ANGLE IRON PER COUNTY RECORDS.

I hereby certify that this land surveying document was prepared and the related survey work was performed by me or under my direct personal supervision and that I am a duly licensed Professional Land Surveyor under the laws of the State of Iowa.

*Gary Wayne Keith* 10/20/2015  
Gary Wayne Keith, P.L.S. Date

License number: 11420

My license renewal date is December 31, 2016

SEAL



List Corners to be Indexed			
Corners	Section	Township	Range
SW CORNER	32	75	18
S. 1/4 COR.	32	75	18
N. 1/4 COR.	5	74	18
NW CORNER	5	74	18

pl. 8 77- CR, Ret N+A - Envelope

Found Sand Stone 10'x2'x4" over  
2-3" round tile

Set C.M. over 1-2" round tile lowered  
in position, Put stone on top C.M.

NE corner Sec. 6-74-18

Found 1/8" iron pin using Co. Eng. Office info.

Accepted position. No certificate of record



31 32  
6 5

Power Pole  
"X" Nails

E Marion Co. Hwy

Found 1/8" Iron Pin

5/8" Iron Pin  
SE Cor. 31-75-18

"X" Nails  
Corner Post

97.25'

32.92'

43.83'

Retied 5/14/11

Brian Morrissey

N.E. Cor 6-74-18

Set. —

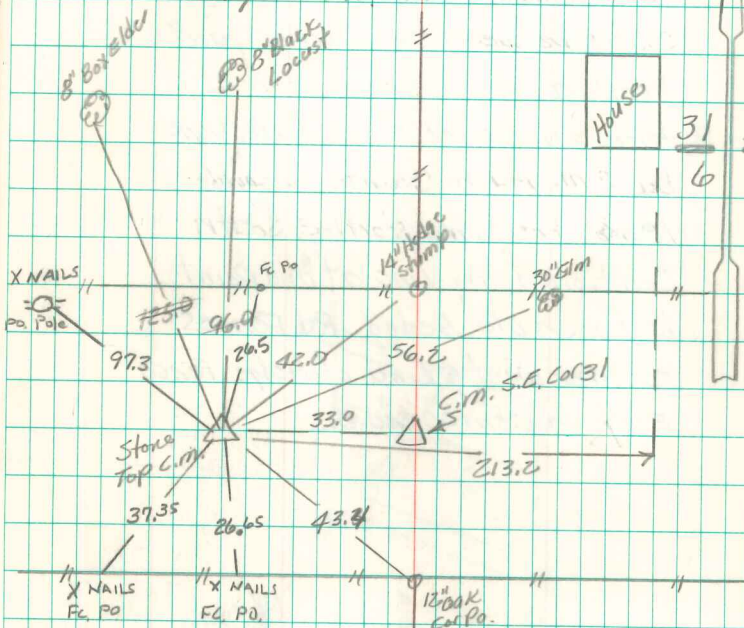
Notes: Kennedy

Party - Wells



House

31 32  
6 5



Set 3/8" IRON PIN OVER

SANDSTONE. SANDSTONE IS

24" DEEP

RETIED AUG 4, 1977

BY GARDEN ENG.

Note: Current Tie

