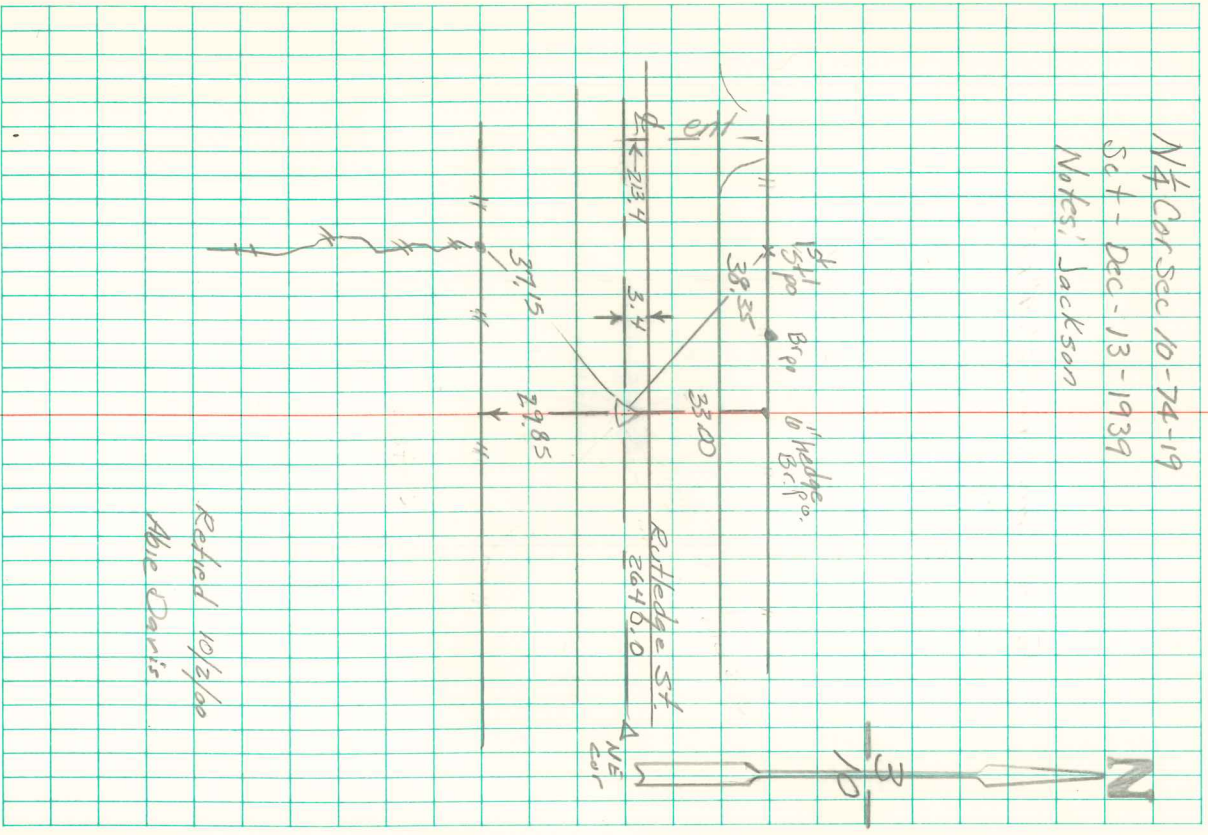


NE Cor Sec 10 - 74-19
Set - Dec - 13 - 1939
Notes: Jackson



Retrod 10/2/00
Abie Davis

Found Limestone Rock 5' x 9' x 15"

Set c.m. Rock on North side c.m.

" Iron Pipe on East side c.m.

Dug 2 1/2 ft. wide x 17' long x 3' deep hole in vicinity of corner. No 1939 ties remain.

Set corner 33.5' so. of base of apparent Base Post on old ties and 2410.0 w of NE Corner of Sec 10. Abie Davis