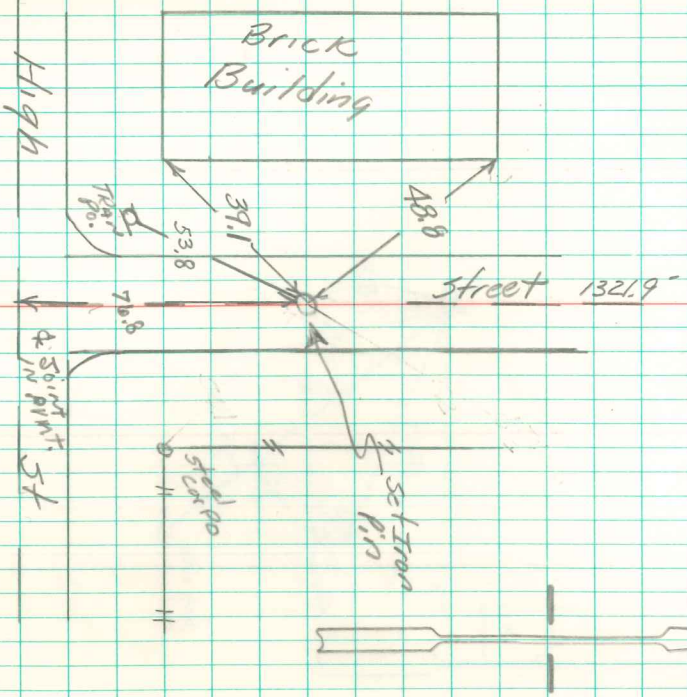


City NW 1/4 Sec 11-74-19

△ N 1/4 NW 1/4



RETRD 13 JULY 1982  
By Bobi Davis  
8/26/86

Set Iron Pin on line  
at split of Dist Between  
N 1/4 corner of the NW 1/4 & the  
SE corner of the NW 1/4 Sec.  
11-74-19