

Instr. Number: 23-4188
 BK: 2023 PG: 4188
 Recorded: 10/5/2023 at 11:44:12.0 AM
 County Recording Fee: \$7.00
 Iowa E-Filing Fee: \$3.13
 Combined Fee: \$10.13
 Revenue Tax:
 NAOMI ELLIS, RECORDER
 Marion County, Iowa

PREPARED BY & RETURN TO: MATTHEW J. THOMAS
 CIVIL DESIGN ADVANTAGE, 4121 NW URBAN DALE DRIVE, URBAN DALE, IOWA 50322 PH: 515-369-4400 FAX: 515-369-4410

UNITED STATES PUBLIC LAND SURVEY CORNER CERTIFICATE OF

Land Survey Monuments situated in Section 7, Township 74N, Range 18W, of the
 Fifth Principal Meridian, MARION County, Iowa.
 Previously recorded in BOOK 2002 PAGE 6030 in County Recorder's Office.

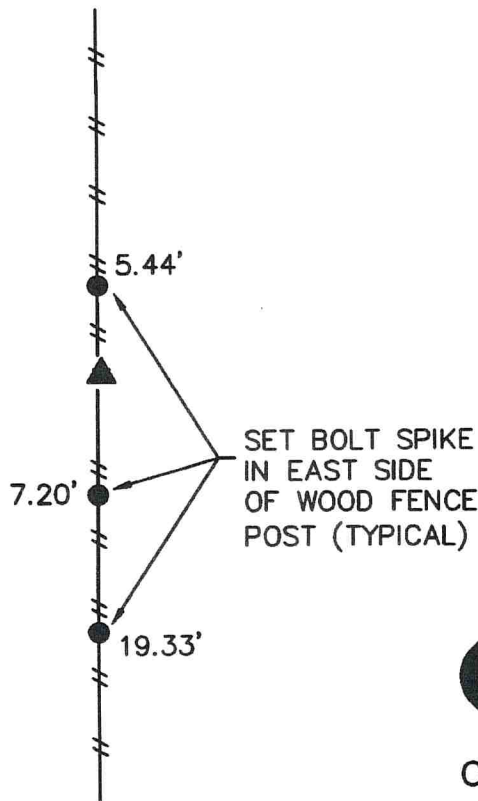
Monument Description and Remarks:

- THERE IS NO CERTIFICATE FOR THE CORNER ON FILE WITH THE RECORDER OF THE COUNTY IN WHICH THE CORNER IS LOCATED.
- THE SURVEYOR IN RESPONSIBLE CHARGE OF THE LAND SURVEYING ACCEPTS A CORNER POSITION WHICH DIFFERS FROM THAT SHOWN IN THE PUBLIC RECORDS OF THE COUNTY IN WHICH THE CORNER IS LOCATED.
- THE CORNER MONUMENT IS REPLACED OR MODIFIED IN ANY WAY.
- THE REFERENCE TIES IN AN EXISTING PUBLIC RECORD ARE INCORRECT OR MISSING.

ORIGINAL MONUMENT WAS OBLITERATED DURING DELONG AML RECLAMATION PROJECT. STATE OF IOWA
 AGRICULTURE AND LAND STEWARDSHIP REQUIRED MONUMENT BE RESET POST CONSTRUCTION.
 MONUMENT RESET BY GPS COORDINATES AND RETRACEMENT PLAT OF SURVEY OF PREVIOUS SURVEY
 RECORDED IN BOOK 2002 PAGE 6029 OF THE OFFICE OF THE MARION COUNTY RECORDER. SET NEW
 REFERENCE TIES PER CODE OF IOWA AND ALL REFERENCE TIES WERE MEASURED PLUMB.

PLAN VIEW

(Show a minimum of three reference ties to durable physical objects, relevant monuments and physical conditions that will enable recovery of the corner.)



**SW CORNER
 SECTION 7-T74N-R18W
 SET 3/4" REBAR
 W/PURPLE CAP #19968
 IOWA SOUTH STATE PLANE
 N=444409.86 E=1782118.73**



I HEREBY CERTIFY THAT THIS LAND SURVEYING DOCUMENT WAS PREPARED AND THE RELATED SURVEYING WORK WAS PERFORMED BY ME OR UNDER MY DIRECT SUPERVISION AND THAT I AM A DULY LICENSED LAND SURVEYOR UNDER THE LAWS OF THE STATE OF IOWA.

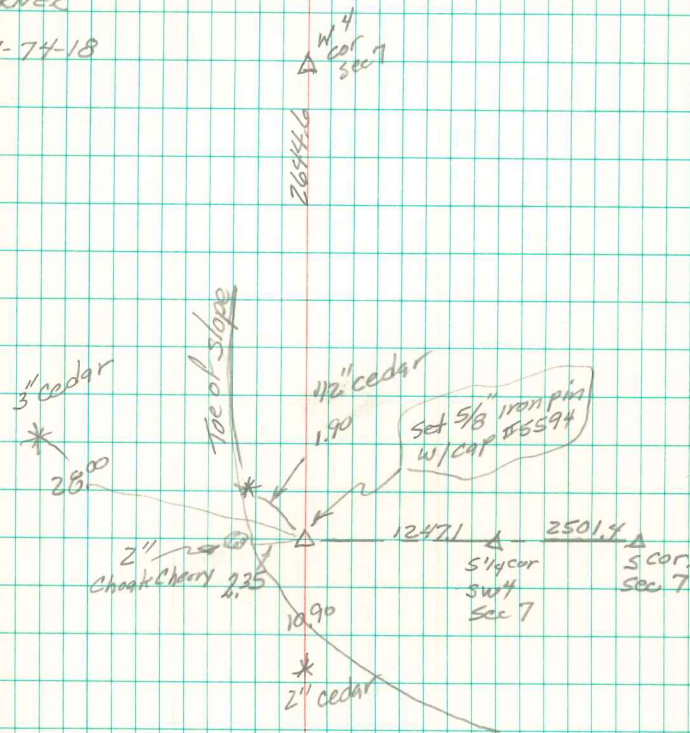
Matthew J. Thomas 10/05/2023
 MATTHEW J. THOMAS, P.L.S. DATE

LICENSE NUMBER 19968
 MY LICENSE RENEWAL DATE IS DECEMBER 31, 2023.
 CERTIFICATION COVERS THIS SHEET ONLY:

List Corners to be Indexed			
Corners	Section	Twp	Range
SW COR	7	74	18
NW COR	18	74	18
SE COR	12	74	19
NE COR	13	74	19

Tech: CY PN: 2203.158 Date: 2023-09-28

SW CORNER
SEC. 7-74-18



set corner at intersection of
property line fences on top line
& property line fences along the south
line of SW 1/4 Abie Davis 8/22/02

Dug hole 2'x3'x16" Found sandstone
on END south of 10" oak corner Post.

Set c.m. Put Two sandstones on
Top of c.m.

25

N.E. Cor 13-74-19

Set - July - 20-1942

Notes - Kennedy

Party - Palmer, Moss & Turman

N

12	7
13	18

