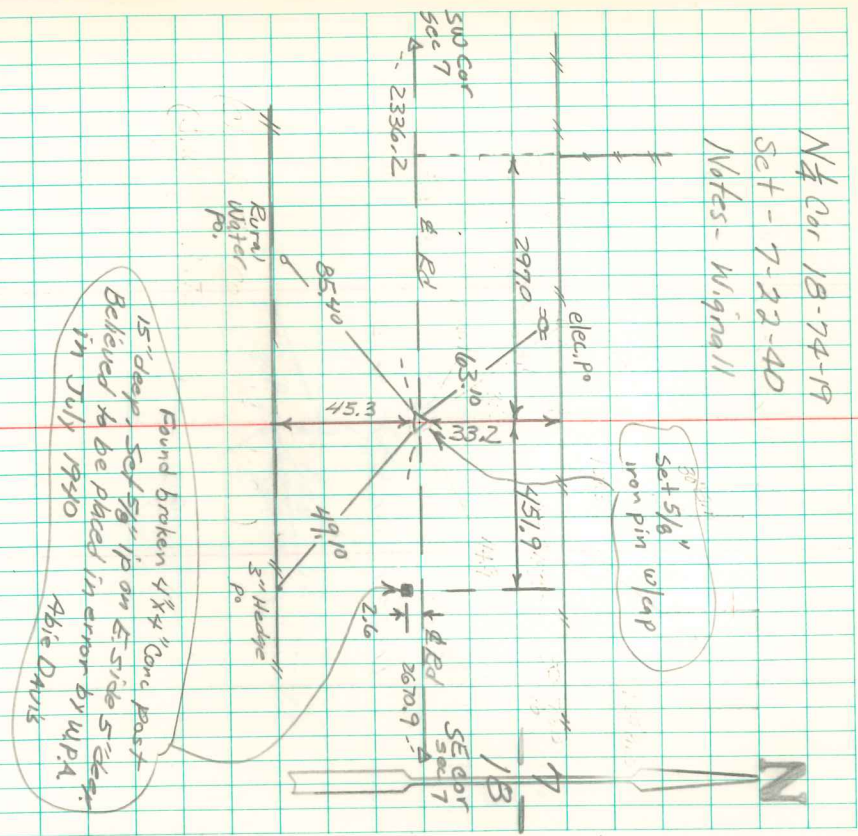


Found small Granit Rock
8" x 6" x 5"

Plumbcd stone, removed &
Dug hole Put stone on bottom
of set c.m.

This corner evidently Not right
according to the Distances East &
West to the section corners:
by Robert Vinson

N $\frac{1}{2}$ Cor 18-74-19
Set - 7-22-40
Notes - Wignall



Retired 9/29/99