

Found broken Pieces of Watkins
 Tile Near same spot Found 2-2"
 A Tile in vertical Position

Lowered 1-2" O Tile in vertical Position
 directly beneath orig Position.

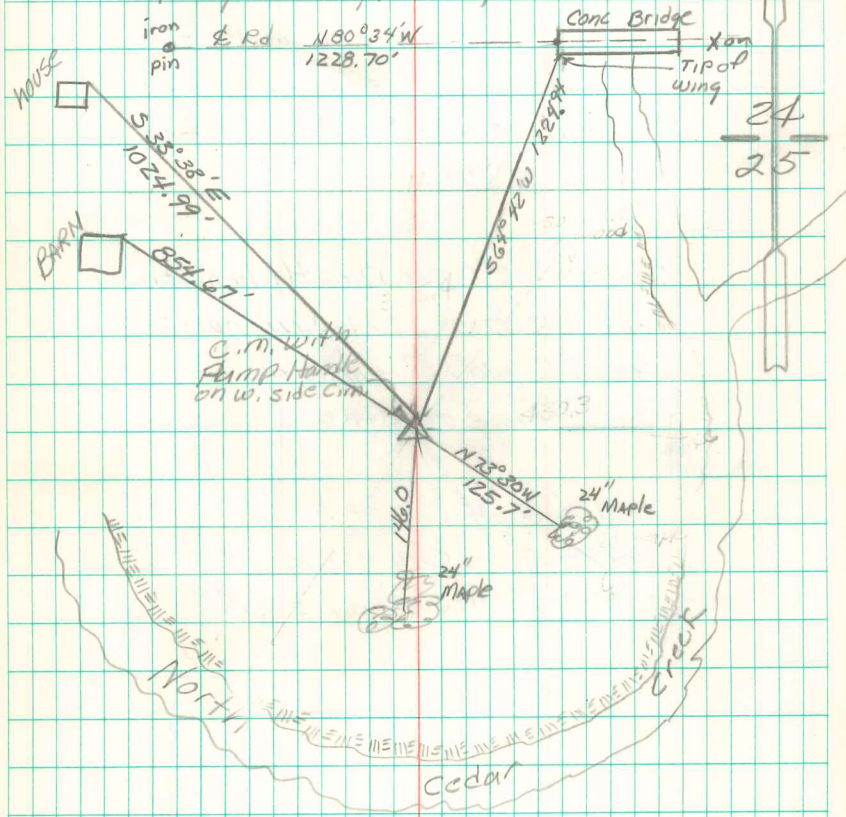
set c.m. over Tile & Placed 1 brick
 on END over c.m. Iron Pump
 Handle on west side c.m.

N¹/₄ Cor 25-74-19

Set - Aug - 5 - 1942

Notes - Kennedy

Party - Barker, Nandell, Frazier & Keith



Found & Retied 12/02/96

Abie Davis

(see Corner Certificate for
 More tie info)