

Prepared by Abie C. Davis, P.E. & L.S., 1428 Oregon St., Knoxville, IA 50138 (641) 842-5863

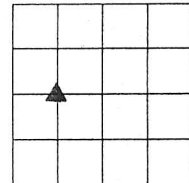
UNITED STATES PUBLIC LAND SURVEY CORNER CERTIFICATE
OF

Land survey Monuments situated in Section 29, Township 74N, Range 19W, of the Fifth Principal Meridian, Murion County, Iowa.

Previously recorded in Book 2012, Page 3179 in County Recorders Office.

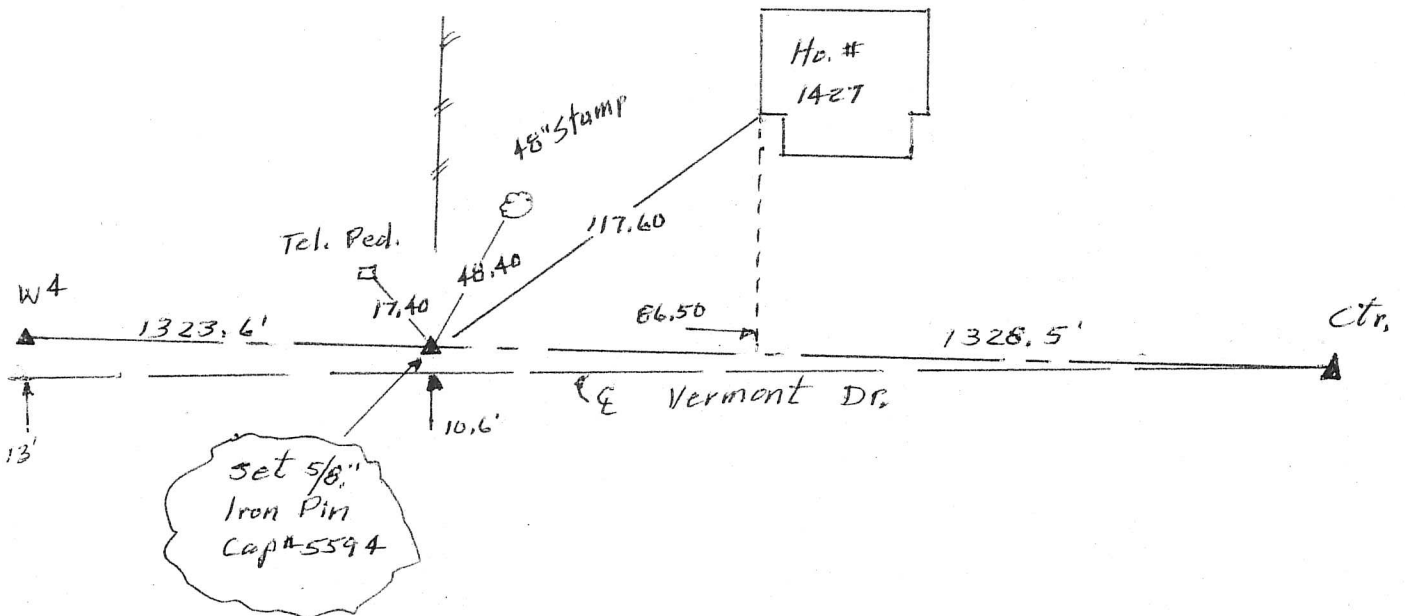
Show reason for preparing this certificate, the evidence and detailed procedures used in establishing the corner positions and monumentation found or placed.

Monument Description and Remarks: Discovered an error in location of previously set corner. Reset on line between the W⁴ corner and the ctr. of section and in line with fence north.



PLAN - VIEW

(Show a minimum of three reference ties to durable physical objects, relevant monuments and physical conditions that will enable recovery of the corner.)



I hereby certify that the survey work was completed and this land surveying document was prepared by me or under my direct personal supervision and that I am a duly licensed land surveyor under the laws of the state of Iowa

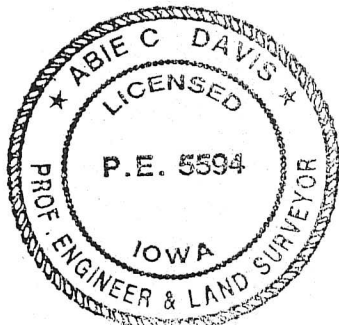
Signature: Abie C. Davis

Abie C. Davis, P.E. & L.S.

Date: 2/23/2016 Reg. No. 5594

My license renewal date is December 31, 2017

SEAL

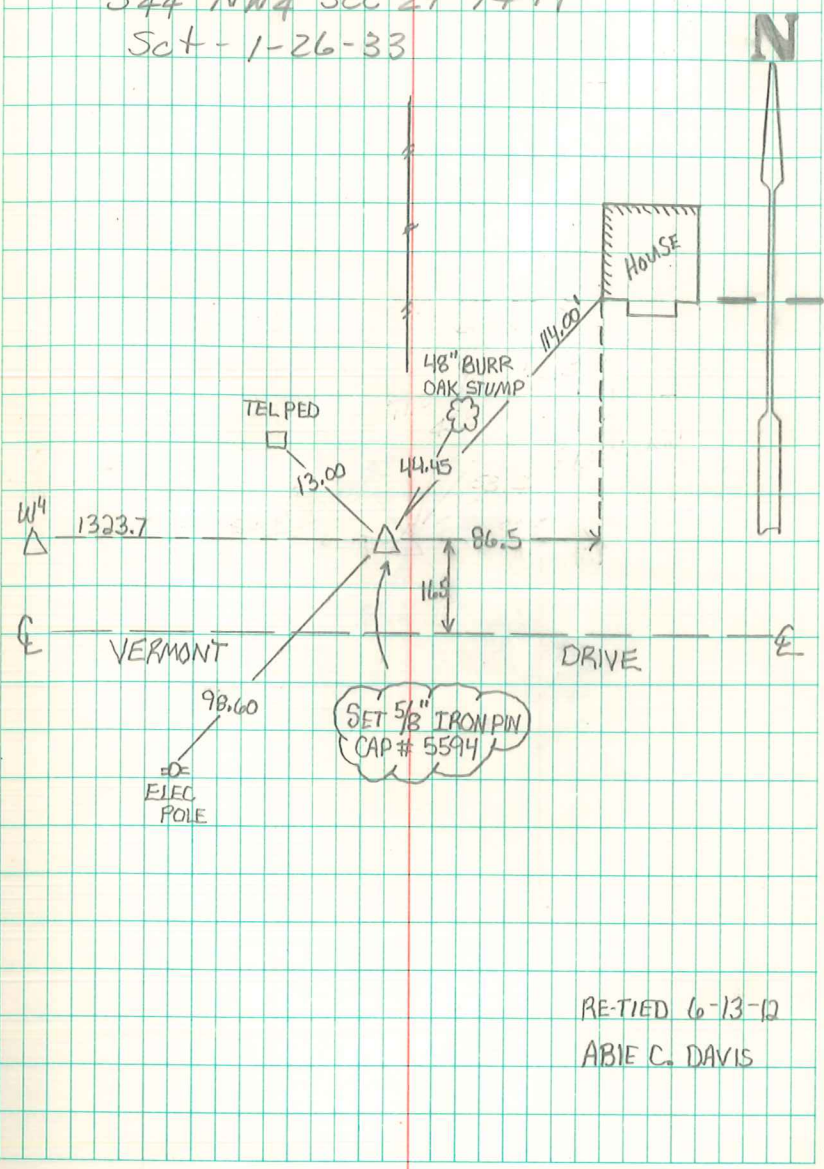


List Corners to be Indexed

Corners	Section	Twp	Range
SW Corn	29	74N	19W
SE+NW4			

5^{1/4} - NW^{1/4} sec 29-74-19

Set - 1-26-33



RE-TIED 6-13-12
ABIE C. DAVIS