

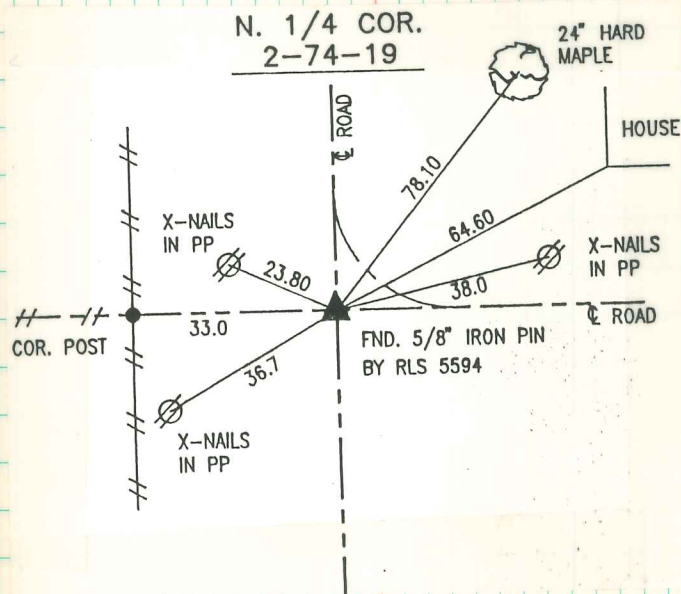
GOV'T SURVEY DOES NOT INDICATE OFFSETS ON N. LINE OF SEC. 2. THE N. 1/4 COR. MATCHES A PREVIOUS PROPERTY FENCELINE SOUTH WHICH WAS SET IN THE CENTER OF AN OLD ROAD. WPA DID NOT FIND OR SET N. 1/4 COR.

THE NE COR. WAS ALSO AT A 4-WAY FENCE CORNER IN 1941 WHICH ALSO SUPPORTS NO OFFSET.

RECORDED AS S. 1/4 COR. 35-75-19  
BOOK 1, P. 57

Book 2 P-61

NORTH 1/4 CORNER S-2 T-74 R-19

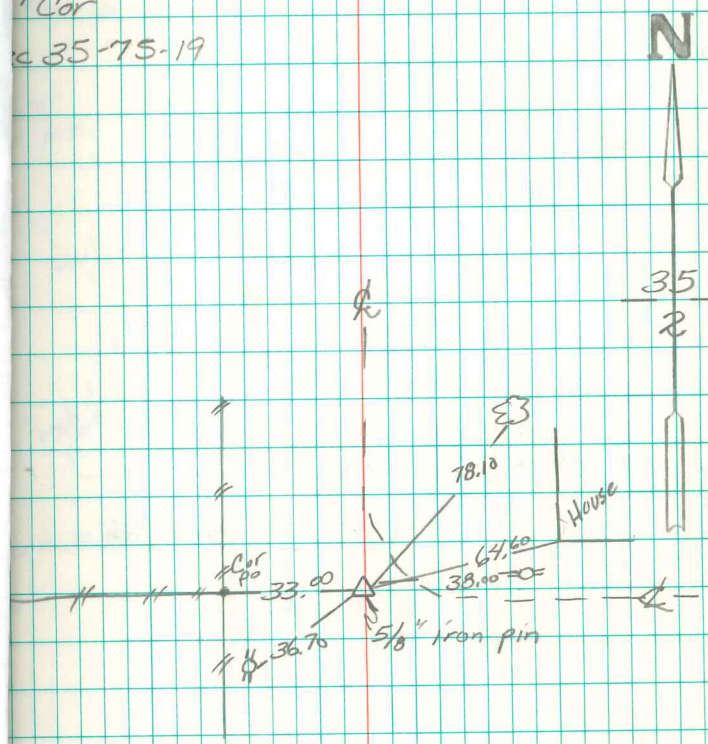


RETIRED

22 July 93

LEROY WINGTEREN

4 Cor  
c 35-75-19



4/7/92  
Abie Davis