



Document 24-313

Book 2024 Page 313 Type CORNR Pages 1

Date 1/26/2024 Time 12:48 PM

Rec Amt \$7.00

NAOMI ELLIS, RECORDER  
MARION COUNTY IOWA

**GA** GARDEN & ASSOC.

P.O. Box 451, Oskaloosa, Iowa 52577-0451 Phone: (641)672-2526

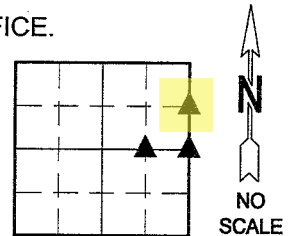
**UNITED STATES PUBLIC LAND SURVEY CORNER CERTIFICATE OF**

LAND SURVEY MONUMENTS SITUATED IN SECTION 32, TOWNSHIP 74, RANGE 19,  
OF THE FIFTH PRINCIPAL MERIDIAN, MARION COUNTY, IOWA.

PREVIOUSLY RECORDED IN NO CERTIFICATE OF RECORD IN COUNTY RECORDER'S OFFICE.

MONUMENT DESCRIPTION AND REMARKS:

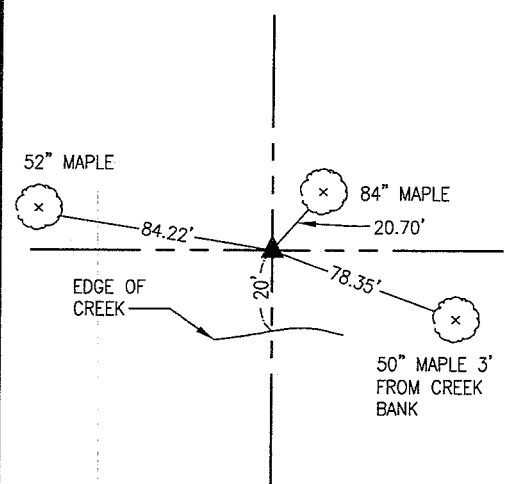
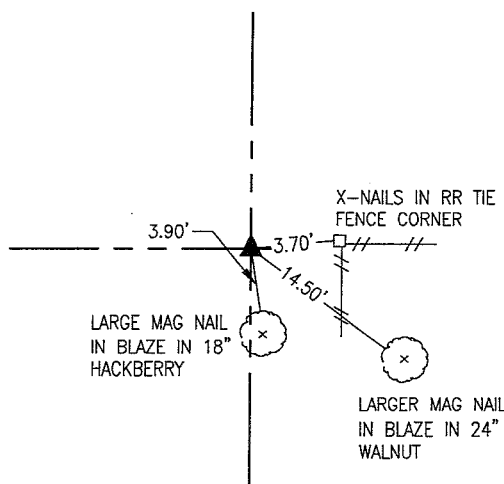
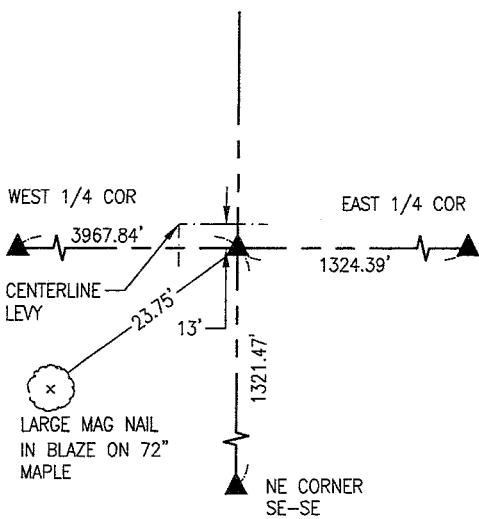
SEE BELOW



NW COR. NE-SE

EAST 1/4 COR

NE COR. SE-NE



ALL TIES ARE LARGE MAG NAIL SET IN BLAZE UNLESS OTHERWISE NOTED.

DECEMBER 15, 2023  
SET 5/8" X 30" REBAR PLS #19960 AT THE MIDPOINT OF A LINE CONNECTING THE EAST 1/4 CORNER AND CALCULATED POSITION FOR THE CENTER OF SECTION 32.

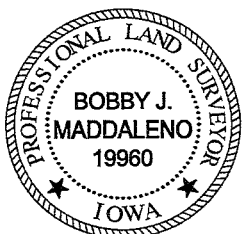
DECEMBER 15, 2023  
WPA NOTES STATE A 10"x12"x18" SANDSTONE WAS FOUND AT THIS LOCATION AND A C.M WAS SET ABOVE. PROBED AROUND FENCE CORNER AND FOUND 6"x6"x10" GRANITE STONE. THIS LOCATION IS IN HARMONY WITH EXISTING FENCES AND THE WESTERLY EXTENSION OF THE SOUTH LINE OF THE SE-NW OF SEC. 33-74-19. ACCEPTED STONE AND PLACED 5/8" X 30" REBAR WITH A YELLOW PLASTIC CAP PLS# 19960 ON THE NORTH SIDE.

DECEMBER 15, 2023  
SET 5/8" X 30" REBAR PLS #19960 AT THE MIDPOINT OF A LINE CONNECTING THE EAST 1/4 CORNER AND THE CALCULATED POSITION FOR THE NE CORNER OF SECTION 32.

I hereby certify that this land surveying document was prepared and the related survey work was performed by me or under my direct personal supervision and that I am a duly licensed Professional Land Surveyor under the laws of the State of Iowa.

LIST CORNERS TO BE INDEXED

CORNERS	SECTION	TOWNSHIP	RANGE
NW COR. NE-SE	32	74	19
EAST 1/4 COR.	32	74	19
NE COR. SE-NE	32	74	19



*Bobby J. Maddaleno* 1-19-24  
Bobby J. Maddaleno, P.L.S. Date  
License number: 19960  
My license renewal date is December 31, 2025

*Pl # 700 ck - Ret Garden Env.*