



Document 24-312

Book 2024 Page 312 Type CORNR Pages 1

Date 1/26/2024 Time 12:46 PM

Rec Amt \$7.00

NAOMI ELLIS, RECORDER  
MARION COUNTY IOWA



GARDEN & ASSOC.

P.O. Box 451, Oskaloosa, Iowa 52577-0451 Phone: (641)672-2526

UNITED STATES PUBLIC LAND SURVEY CORNER CERTIFICATE OF

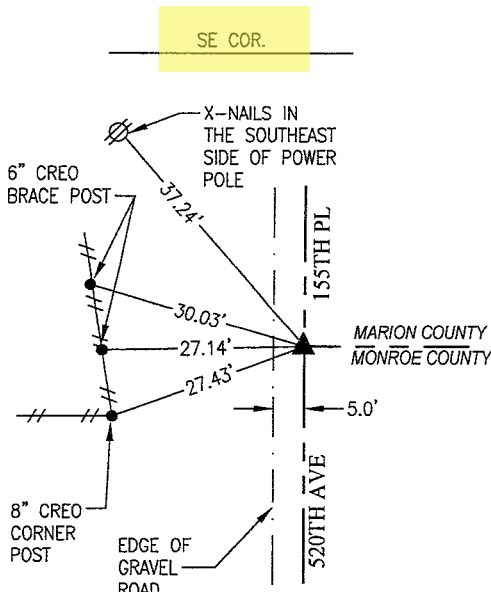
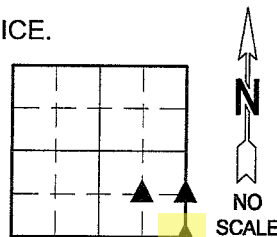
LAND SURVEY MONUMENTS SITUATED IN SECTION 32, TOWNSHIP 74, RANGE 19,

OF THE FIFTH PRINCIPAL MERIDIAN, MARION COUNTY, IOWA.

PREVIOUSLY RECORDED IN NO CERTIFICATE OF RECORD IN COUNTY RECORDER'S OFFICE.

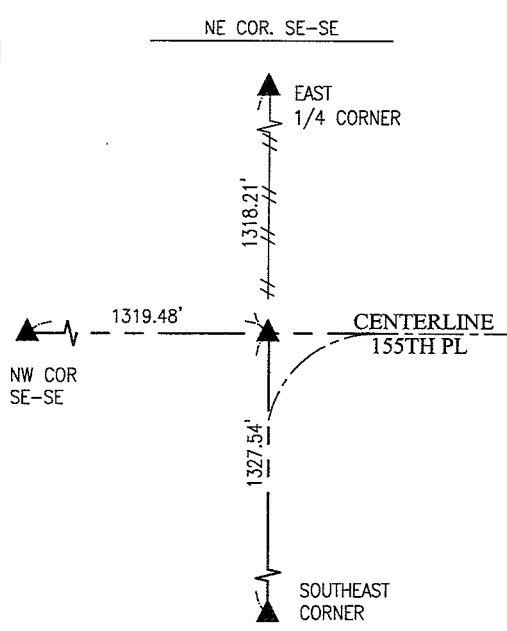
MONUMENT DESCRIPTION AND REMARKS:

SEE BELOW

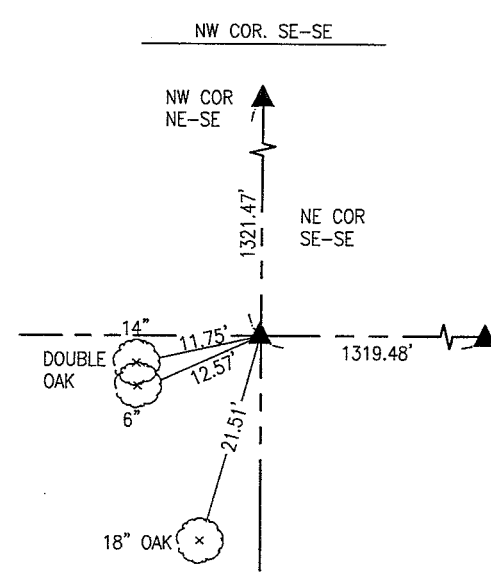


ALL TIES ARE LARGE MAG NAILS IN TOP OF FENCE POSTS UNLESS OTHERWISE NOTED

DECEMBER 15, 2023  
DUG 2' HOLE AT SEARCH LOCATION BASED UPON ROAD CENTERLINE TO THE NORTH, EXISTING FENCES AND WPA TIES. THIS POSITION IS 22.5' EAST OF WEST R.O.W FENCE. COULD NOT FIND C.M. OR IRON PIN SET ABOVE. SET 5/8" X 30" REBAR PLS #19960 AND TIED CORNER.



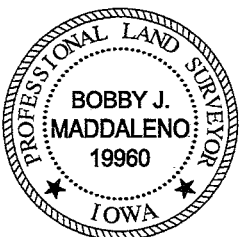
DECEMBER 15, 2023  
COUNTY ENGINEER TIES SHOW A FENCE POST IN THE DITCH. COULD NOT LOCATE SAID FENCE POST. SET 5/8" REBAR #19960 AT INTERSECTION OF FENCE LINE NORTH AND ROAD CENTERLINE TO THE EAST AND SOUTH. THERE ARE NO DURABLE TIES IN THE VICINITY OF THE CORNER.



ALL TIES ARE LARGE MAG NAILS SET IN BLAZE IN TREE UNLESS OTHERWISE NOTED.

DECEMBER 15, 2023  
SET 5/8" X 30" REBAR PLS #19960 AT THE INTERSECTION OF LINES CONNECTING THE CALCULATED POSITION FOR OPPOSING 1/4-1/4 CORNERS.

I hereby certify that this land surveying document was prepared and the related survey work was performed by me or under my direct personal supervision and that I am a duly licensed Professional Land Surveyor under the laws of the State of Iowa.



*Bobby J. Maddaleno* 1-19-24  
Bobby J. Maddaleno, P.L.S. Date  
License number: 19960  
My license renewal date is December 31, 2025

LIST CORNERS TO BE INDEXED

CORNERS	SECTION	TOWNSHIP	RANGE
SE COR	32	74	19
NE COR SE-SE	32	74	19
NW COR SE-SE	32	74	19

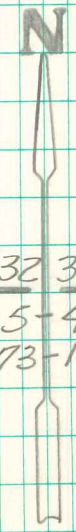
pd \$700 ck-Ret Garden Env.

Established Cor From Ref. Ties  
of R. T. Johnson Co. BNGr.

Retied Oct-3-72

Set C.M. over Broken Crockery

S.E. Cor 32-74-19  
Set - 7-16-40  
Notes - Wignall



32 33  
5-4  
73-19

