

Instr. Number: 22-3323
 BK: 2022 PG: 3323
 Recorded: 6/20/2022 at 2:48:49.0 PM
 County Recording Fee: \$7.00
 Iowa E-Filing Fee: \$3.00
 Combined Fee: \$10.00
 Revenue Tax:
 NAOMI ELLIS, RECORDER
 Marion County, Iowa

RETURN TO: DANIELS LAND SURVEYING, 22470 18TH LANE, NEW VIRGINIA IA 50210 (515) 577-2583

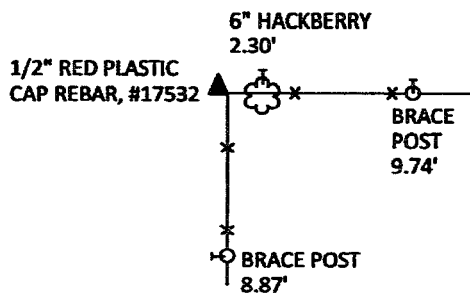
UNITED STATES PUBLIC LAND CORNER CERTIFICATE

Land Survey Monuments in Section 33, Township 74 North, Range 19 West of the 5th P.M., Marion County, Iowa.
 Previously recorded in n.a. in the County Recorder's Office

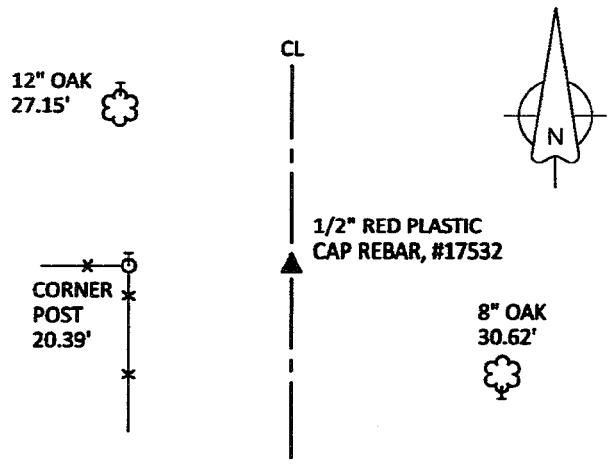
MONUMENT DESCRIPTIONS AND REMARKS:

SW COR. NE 1/4 NE 1/4 - Accepted ancient boundary fence corner. SE COR. NE 1/4 NE 1/4 - Set midpoint and online between E 1/4 corner and calculated NE Corner. SE COR. SW 1/4 NW 1/4 - Found 1/2" rebar, 4" deep from County Engineer ties. Accepted position. E 1/4 CORNER - Set at intersection of center of old road bed with boundary fence East/West.

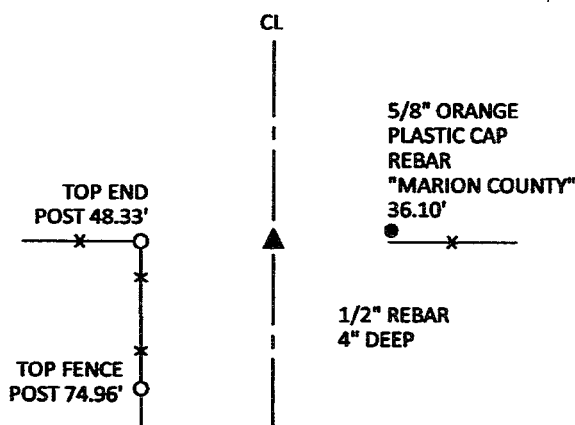
PLAN VIEW



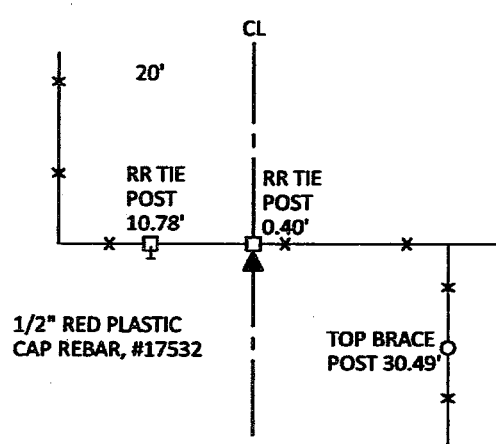
SW COR. NE 1/4 NE 1/4



SE COR. NE 1/4 NE 1/4

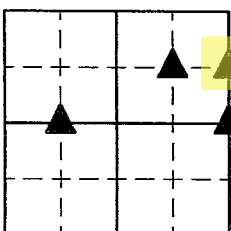


SE COR. SW 1/4 NW 1/4



E 1/4 COR.

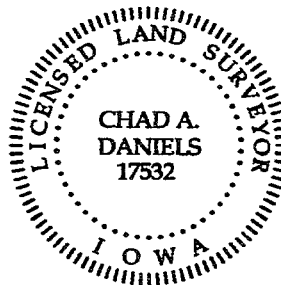
ALL TIES TO RING SHANK NAILS UNLESS NOTED



Section Number:

33

Project Number: 1870



I hereby certify that this surveying document was prepared by me and the related survey work was performed by me or under my direct personal supervision and that I am a duly licensed Professional Land Surveyor under the laws of the State of Iowa.

Signed Chad A. Daniels 20 JUN 22
 Chad A. Daniels Date

Iowa License No. 17532
 My license renewal date is 12-31-2022