

Found 10"X12"X22" Gray Sandstone
over 2" OTile 2' Below Surface to
Top of Tile.

Set C.M. over 1-2" OTile - Top of C.M.
12" Below Surface 10"X12"X22" Sandstone
on North side of C.M.

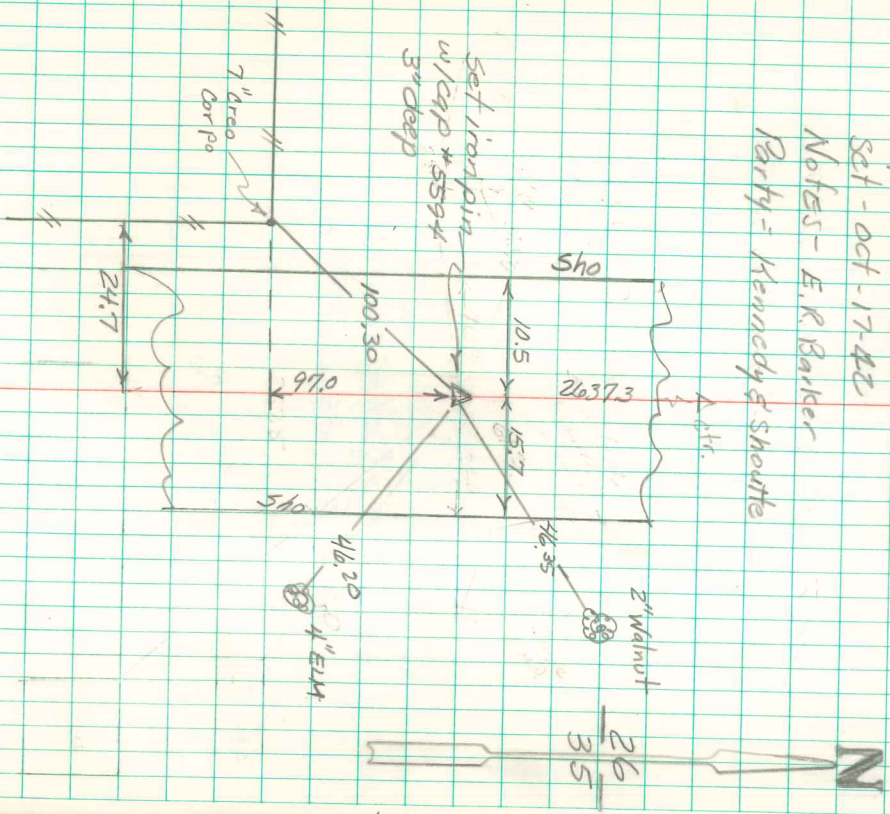
Set C.M. 4' 6" Sandstone over C.M.

2622.0' N. of E. line W. from Ctr. Sec.

2640.0' W. of C.M. N.E. Cor. Sec.

1322.0' W of store at 1/4 Cor.

N $\frac{1}{2}$ Cor - 35-74-19
Set - Oct - 17-22
Notes - E. R. Barker
Party - Kennedy & Shourte



LARGE AREA HERE WAS DUG IN DOWER VICINITY WITH NO
EVIDENCE FOUND. SET CORNER FROM REFERENCE PLAT OF
SURVEY BY BOB WILSON, LS # 4521 DATED MARCH 1978.

Eric Davis 5/31/02