

KAREN SCHWANEBECK, RECORDER
MARION COUNTY IOWA

Prepared by Abie C. Davis, P.E. & L.S., 1428 Oregon St., Knoxville, IA 50138 (641) 842-5863

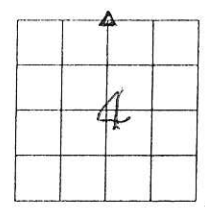
UNITED STATES PUBLIC LAND SURVEY CORNER CERTIFICATE OF

Land survey Monuments situated in Section 4, Township 74N, Range 19W, of the Fifth Principal Meridian, Marion County, Iowa.

Previously recorded in N/A in County Recorders Office.
(book, page, document number, etc.)

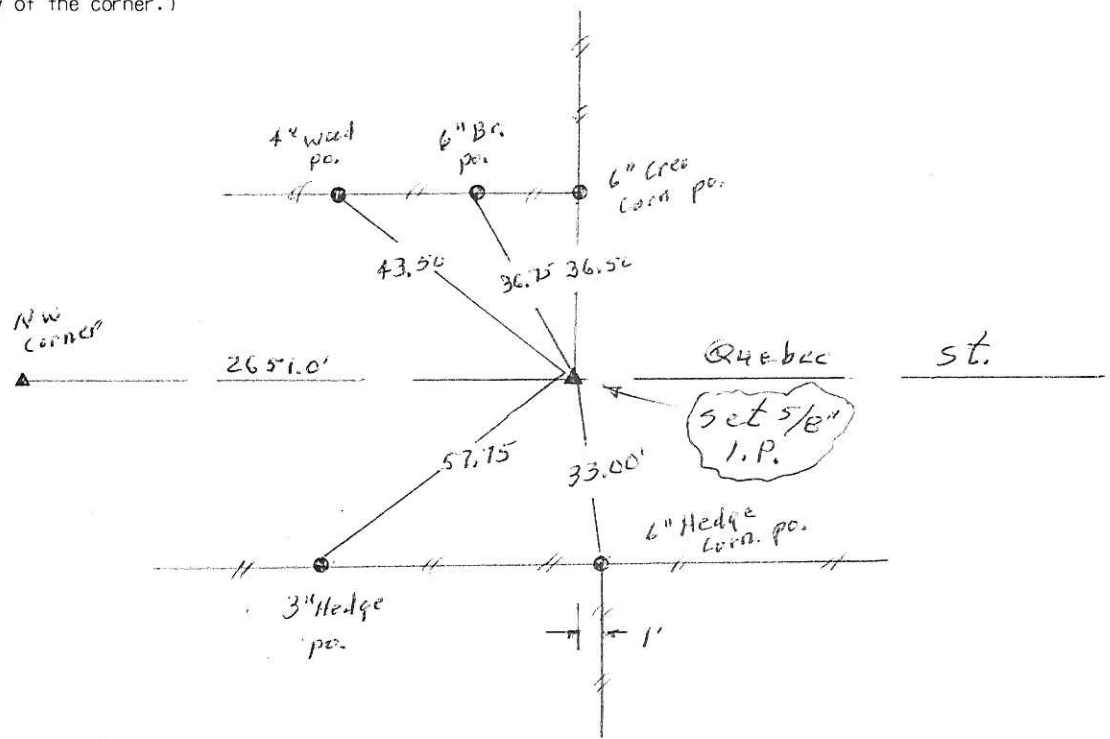
Show reason for preparing this certificate, the evidence and detailed procedures used in establishing the corner positions and monumentation found or placed

Monument Description and Remarks: Set 5/8" Iron Pin
in location from old reference ties in
Co. Engr. tie book



PLAN - VIEW

(Show a minimum of three reference ties to durable physical objects, relevant monuments and physical conditions that will enable recovery of the corner.)



I hereby certify that the survey work was completed and this land surveying document was prepared by me or under my direct personal supervision and that I am a duly licensed land surveyor under the laws of the state of Iowa

Signature: Abie C Davis
Abie C. Davis, P.E. & L.S.

Date: 7/15/19 Reg. No. 5594

My license renewal date is December 31, 2019

SEAL



List Corners to be Indexed			
Corners	Section	Twp	Range
N/A	4	74N	19W

PL 700 Cash Rec Abie Davis

Dug hole in Road 8'x10'x6' Found
No evidence as Road had been
excavated For Culvert

set c.m. Put some broken Crockery
around c.m. at base. in Line
with North & south Fence.

N $\frac{1}{2}$ Cor Sec 4-74-19

Set - July - 8 - 1942

Notes = Kerandy

Party - Palmer, Moss & Truman

