

One hole in Rd 5'x12'x6' Found
 Creo. Stake Formerly set by
 Bob Johnson County ENG. Survey
 West of C.M.

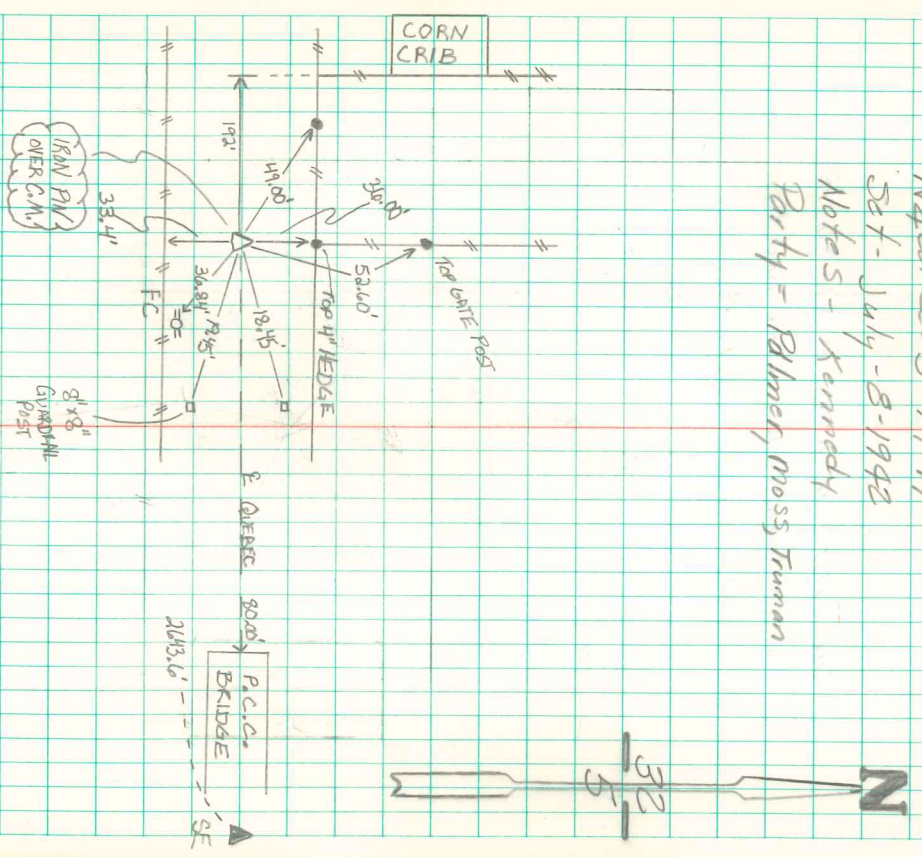
Stone set in road 2640.0' East of Hub

Set C.M. in Center of road west of
 Creek Bridge with broken Tle under
 C.M.

Put a Sand stone 8'x10'x2" on Top C.M.

2644.0' W of C.M.
 2644.0' E of C.M.

N¹/₂ Cor Sec 5-79-19
 Set - July - 8-1942
 Note S - Kennedy
 Party - Palmer, Moss, Truman



NEW TIES SET 4/23/05
 ASHLEIGH D. DAVIS #15594