

Instr. Number: 19-5558
 BK: 2019 PG: 5558
 Recorded: 11/22/2019 at 8:41:45.0 AM
 County Recording Fee: \$7.00
 Iowa E-Filing Fee: \$3.13
 Combined Fee: \$10.13
 Revenue Tax:
 KAREN SCHWANEBECK, RECORDER
 Marion County, Iowa

PREPARED BY & RETURN TO ERIC MILLER, SNYDER & ASSOCIATES, INC. 2727 SW SNYDER ROAD, ANKENY, IOWA 50023 (515) 964-2020

UNITED STATES PUBLIC LAND SURVEY CORNER CERTIFICATE OF

Land Survey Monuments situated in Section 12, Township 75, Range 20 W, of the Fifth Principal Meridian, MARION, County, Iowa. Previously recorded in N/A in County Recorder's Office.
 (book, page, document number, ect.)

(Show reason for preparing this certificate, the evidence and detailed procedures used in establishing the corner positions and monumentation found or placed.)

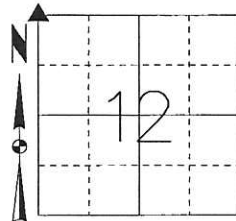
Monument Description and Remarks:

NW CORNER SECTION 12-75-20

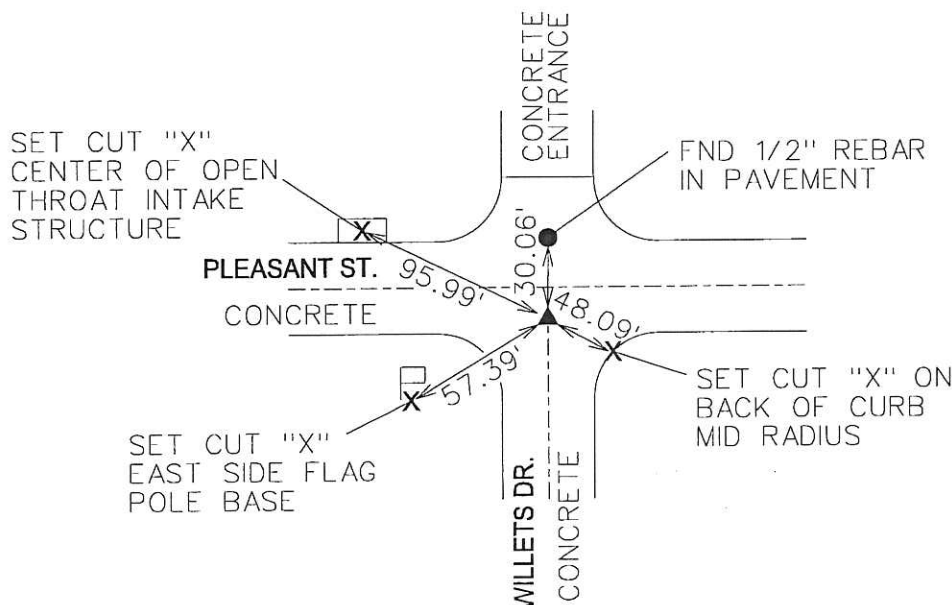
VISUALLY SEARCHED AREA USING SURROUNDING PLATS AND FOUND A 6" X 6" CHISELED "X" IN CONCRETE. VERIFIED LOCATION WITH DIMENSIONS SHOWN ON SURROUNDING PLATS AND ACCEPTED MONUMENT AS SECTION CORNER. THIS CERTIFICATE IS BEING FILED BECAUSE THERE IS NO CERTIFICATE FOR THE CORNER ON FILE WITH THE RECORDER.

Plan-View

(Show a minimum of three reference ties to durable physical objects, relevant monuments and physical conditions that will enable recovery of the corner.)



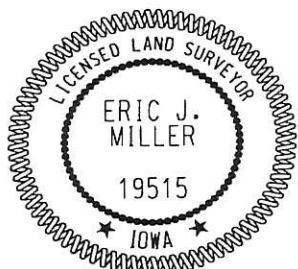
NW CORNER
 FOUND 6" X 6" CHISELED "X" IN CONCRETE



NOTE: ALL DISTANCES MEASURED HORIZONTAL UNLESS OTHERWISE NOTED.

S&A FND1000

SBLASDELL
11/21/2019
I:\Survey\Section_Corners\S&A_Section_Certificate\TWP_RNG_SEC_PROJECT_MINN75_20_12_NW_1190.394.dgn



I hereby certify that this land surveying document was prepared and the related survey work was performed by me or under my direct personal supervision and that I am a duly licensed Land Surveyor under the laws of the State of Iowa.
Eric J Miller 11-21-19
 Eric J. Miller, PLS Date
 License Number 19515
 My License Renewal Date is December 31, 2020
 Pages or sheets covered by this seal:
 SHEET 1 OF 1

List Corners to be Indexed

Corners	Section	Twp	Range
NW COR	12	75	20
NE COR	11	75	20
SE COR	2	75	20
SW COR	1	75	20

TECH: SDB/EJM PN: 75-20-12-NW 119.0394 DATE: 11/21/19

KAREN SCHWANEBECK, RECORDER
 MARION COUNTY IOWA

PREPARED BY: VEENSTRA & KIMM, INC. - 3000 WESTOWN PARKWAY - WEST DES MOINES, IOWA 50266-1320 - (515) 225-8000

UNITED STATES PUBLIC LAND SURVEY CORNER CERTIFICATE OF

Land Survey Monuments situated in Section 11, Township 75N, Range 20W, of the Fifth Principal Meridian, Marion County, Iowa. Previously recorded in BK.1 PG.22.
 (Show reason for preparing this certificate, the evidence and detailed procedures used in establishing the corner positions and monumentation found or placed.)

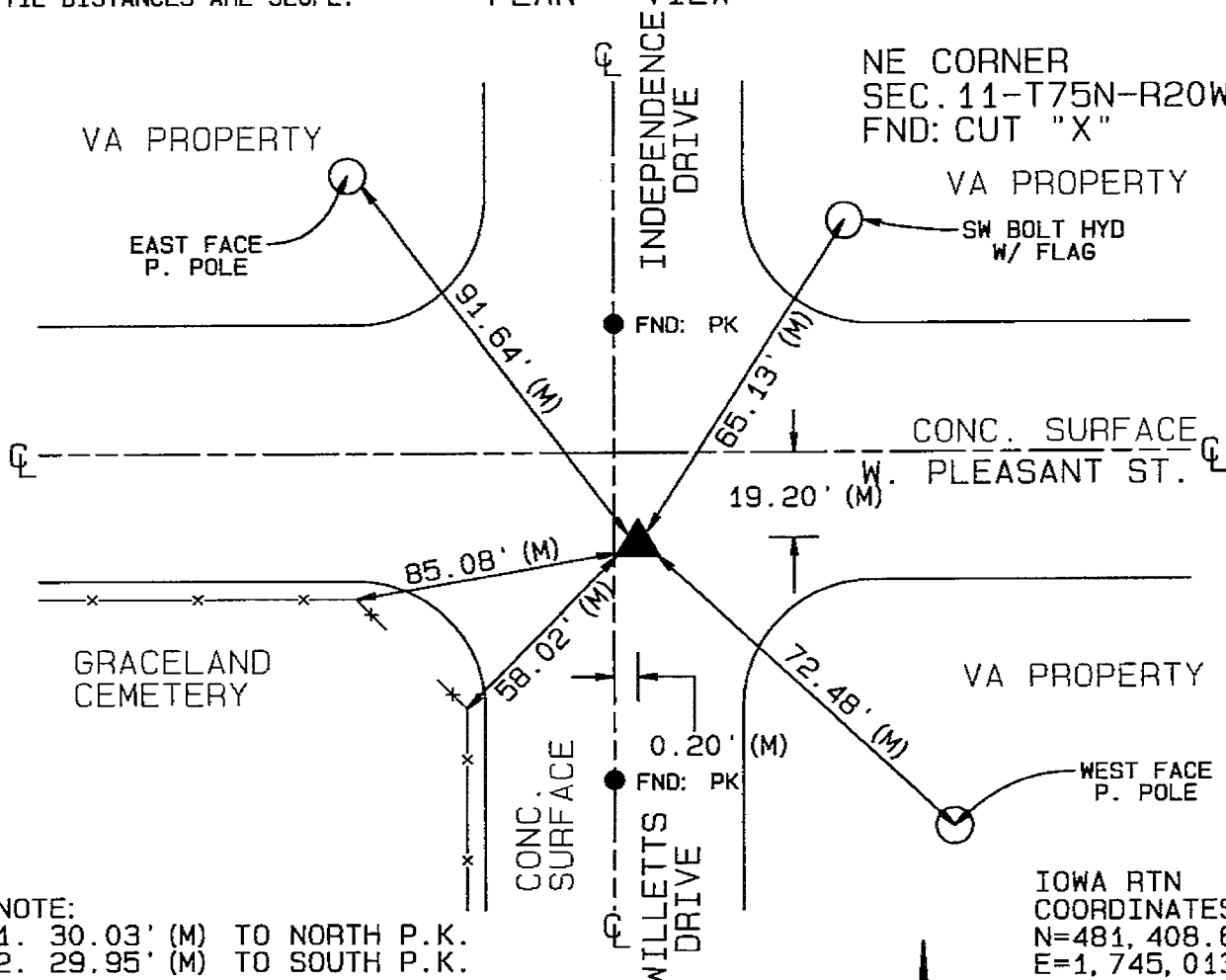
Monument Description and Remarks:

LOCATED CORNER FOR PLAT OF SUBDIVISION IN GRACELAND CEMETERY. FOUND CUT "X" IN EASTBOUND LANE OF W.PLEASANT ST. MONUMENT IN BK.1 PG.22 (1991) WAS A CONCRETE NAIL IN PAVEMENT. SURVEY IN BK.2011 PG.761 ALSO FOUND CUT "X" IN CONCRETE. NO TIE SHEET FOUND INDICATING A CUT "X" WAS SET.

(Show a minimum of three reference ties to durable physical objects, relevant monuments and physical conditions which will enable recovery of the corner)

ALL TIE DISTANCES ARE SLOPE.

PLAN - VIEW



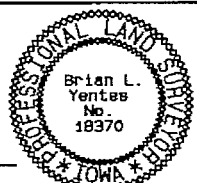
- NOTE:
 1. 30.03' (M) TO NORTH P.K.
 2. 29.95' (M) TO SOUTH P.K.

IOWA RTN COORDINATES
 N=481,408.62'
 E=1,745,013.18

I hereby certify that this land surveying document was prepared and the related survey work was performed by me or under my direct personal supervision and that I am a duly licensed Land Surveyor under the laws of the State of Iowa.

Signed B. Yentes

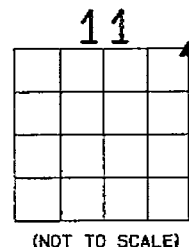
Date 5/2/11



Brian L. Yentes, P.L.S.
 Iowa License No. 18370
 My license renewal date is December 31, 2012
 Pages or Sheets covered under this seal: _____

This Page _____

GRID NORTH
 IOWA RTN
 NAD83 (CORS)



(NOT TO SCALE)

LEGEND
 ▲ FOUND SECTION CORNER (M) "AS MEASURED" DISTANCE OR BEARING
 △ SET SECTION CORNER (R) "AS RECORDED" DISTANCE OR BEARING

Corners	List Corners to be Indexed Section	Township	Range
NE CDR.	11	75N	20W
SE CDR.	2	75N	20W
SW CDR.	1	75N	20W
NW CDR.	12	75N	20W

Pds 900 cash - Ret Veenstra & Kimm

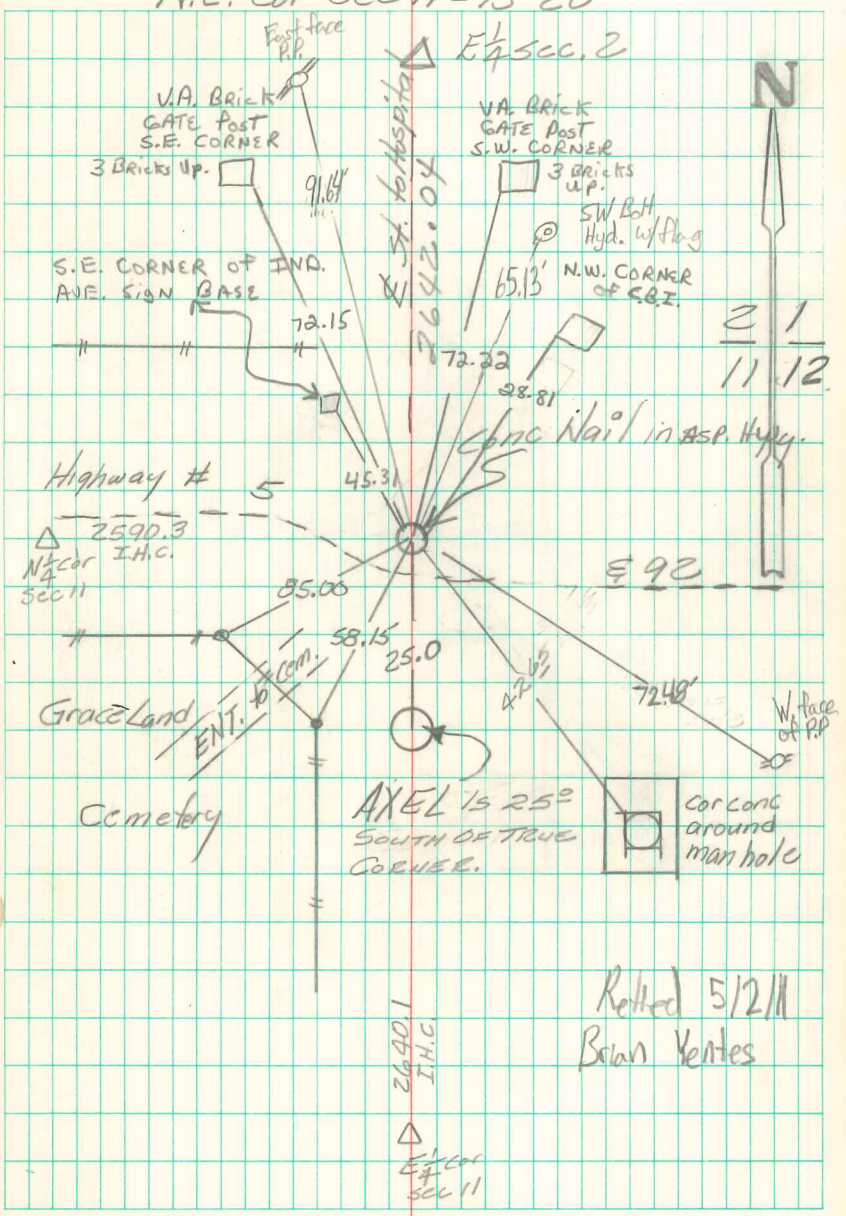
H

N.E. Cor sec 11-75-20

Set Conc. Nail in Pavement
From Ties Furnished by City
ENG. O. Hellman & Garden ENG. CO.
R.C. Vinson

Ref to AXEL 25.0' South of True Cor.

- 88.16' N.W. to Cen. Fence Cor B
- 37.91' S.W. " " " "
- 20.55' S.E. to N.W. Cor. Conc. Man. Hole
- 81.6' N.E. to 12" Tree N. Side Street



Retted 5/2/11
Brian Yentes