

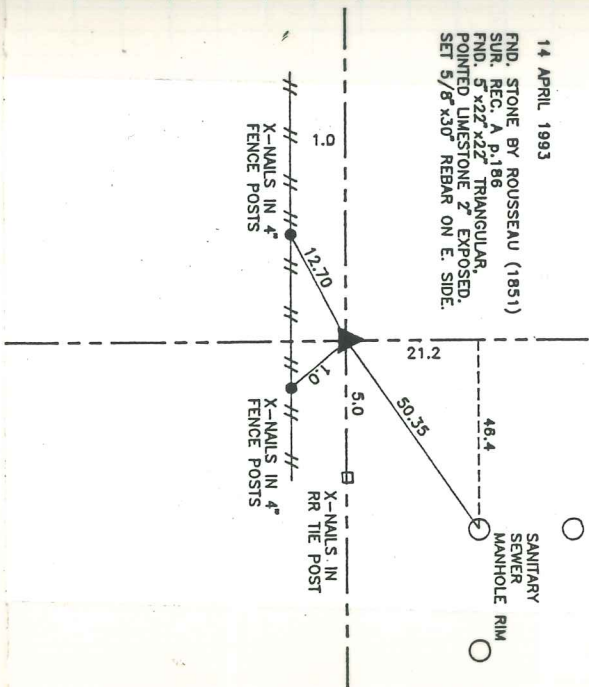
SE CORN. NW-SW

SEC-18-75-20

SE COR. NW-SW
12-75-20

14 APRIL 1993

FND. STONE BY ROUSSEAU (1851)
SUR. REC. A.P. 186
FND. 5' x 22" x 22" TRIANGULAR,
POINTED LIMESTONE 2" EXPOSED.
SET 5/8" x 30" REBAR ON E. SIDE.



SET LEGAL MONUMENT
31 DEC. 1994 #4708