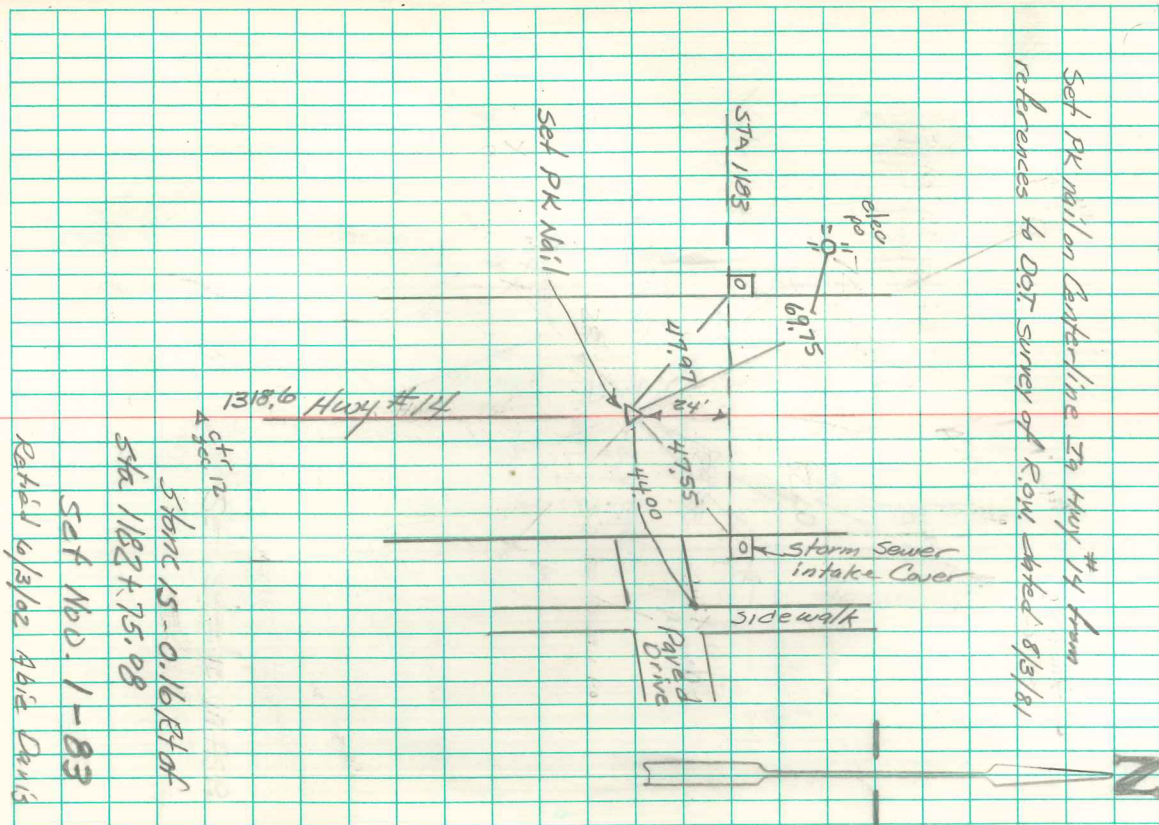


NW COR SW 1/4 NE 1/4 SEC 12 - 75-20

Set PK nail on center-line to Hwy 14 from
references to DOT survey of ROW dated 8/3/81



STATION 15 - 0.16/84.6'

STA 1182 + 75.08

SET NO. 1 - 83
Revised 6/3/02 ABIE DENIS