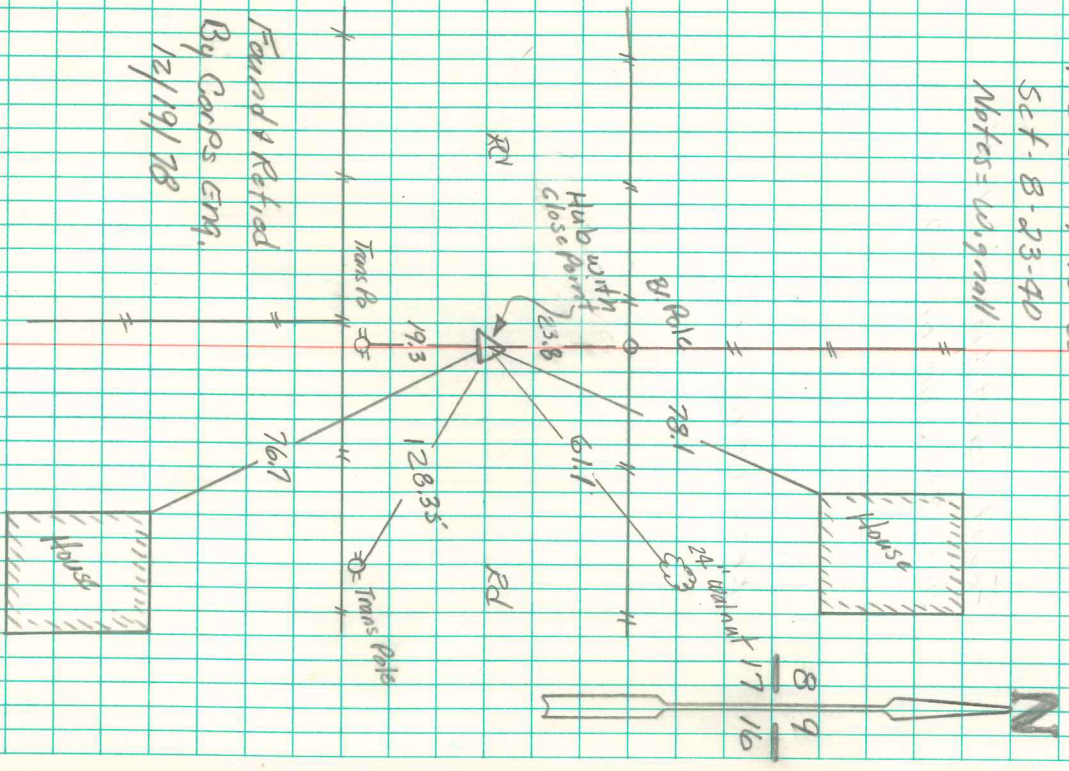


Found Sand Stone 16x10x8"
 over 1-4" Drain Tile Filled with
 Fragments of Sand Stone

Set C.M over 1-4" Drain Tile
 Placed Sand Stone over C.M.

N.E. Cor 17-75-20
 Set - B. 23-40
 Notes = original



Found & Retired
 By Corps Eng.
 12/19/78