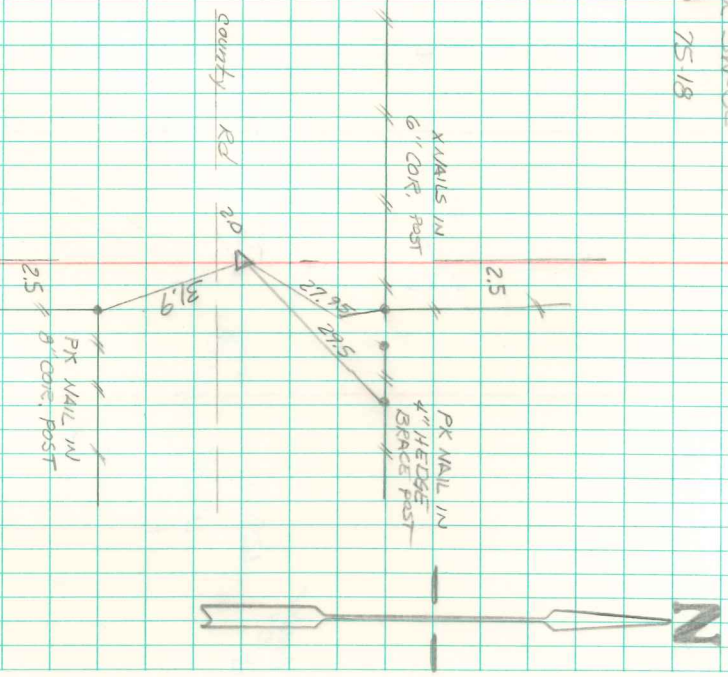


NW 1/4 SW 1/4 SE  
 SEC 20 T5S R18E



Sept. 10, 1998  
 ESTABLISHED COR ON LINE OF HIGHWAY  
 BETWEEN SW 1/4 COR & CTR. SEC 18.  
 SET 5/8" X 30" REBAR 6" DEEP,  
 SET 60P SPK ABOVE REBAR  
 LEADY MOUNTAIN LS 4' 6.70DS