

Found yellow sandstone 12" x 12" x 5"  
over oak stake 17" long. No. 716

Set C.M. on top 1-2 1/2" D. Tile  
" Stone on N. side C.M.

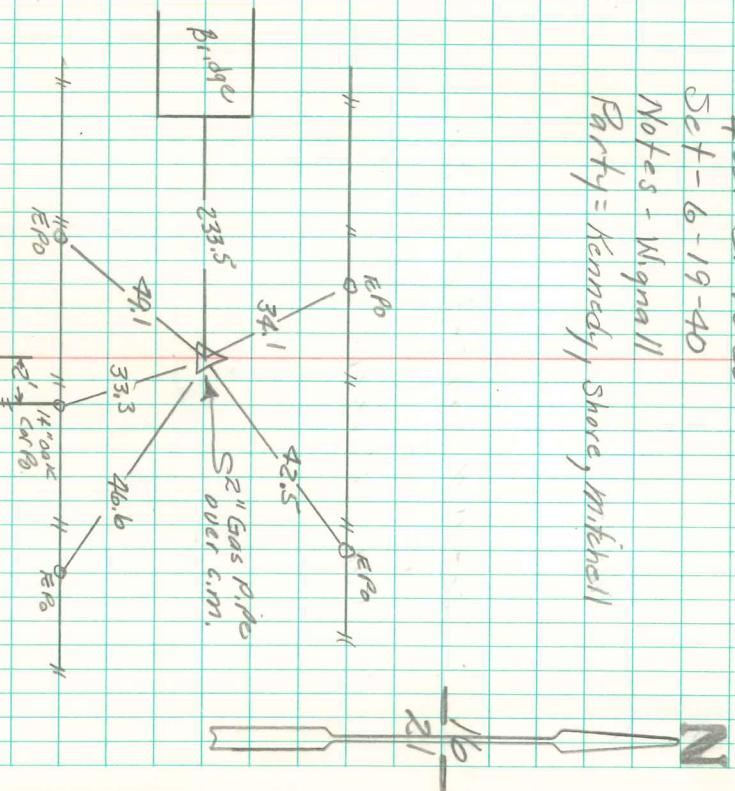
C.M. 12" Peck

N 1/4 Cor 21-75-20

Set - 6-19-40

Notes - Wignall

Party = Kennedy, Shore, Mitchell



C.M. Buried 5 by Constr.

Found May 8-1954 by Unson

Randa 1 1/2" Mill

Set 2" x 3" Gas pipe Directly  
over C.M.