

Prepared by Abie C. Davis, P.E. & L.S., 1428 Oregon St., Knoxville, IA 50138 (641) 842-5863

UNITED STATES PUBLIC LAND SURVEY CORNER CERTIFICATE OF

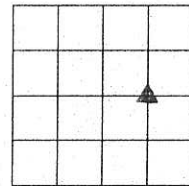
Land survey Monuments situated in Section 22, Township 75N, Range 20W, of the Fifth Principal Meridian, Marion County, Iowa.

Previously recorded in N/A in County Recorders Office.

Show reason for preparing this certificate, the evidence and detailed procedures used in establishing the corner positions and monumentation found or placed

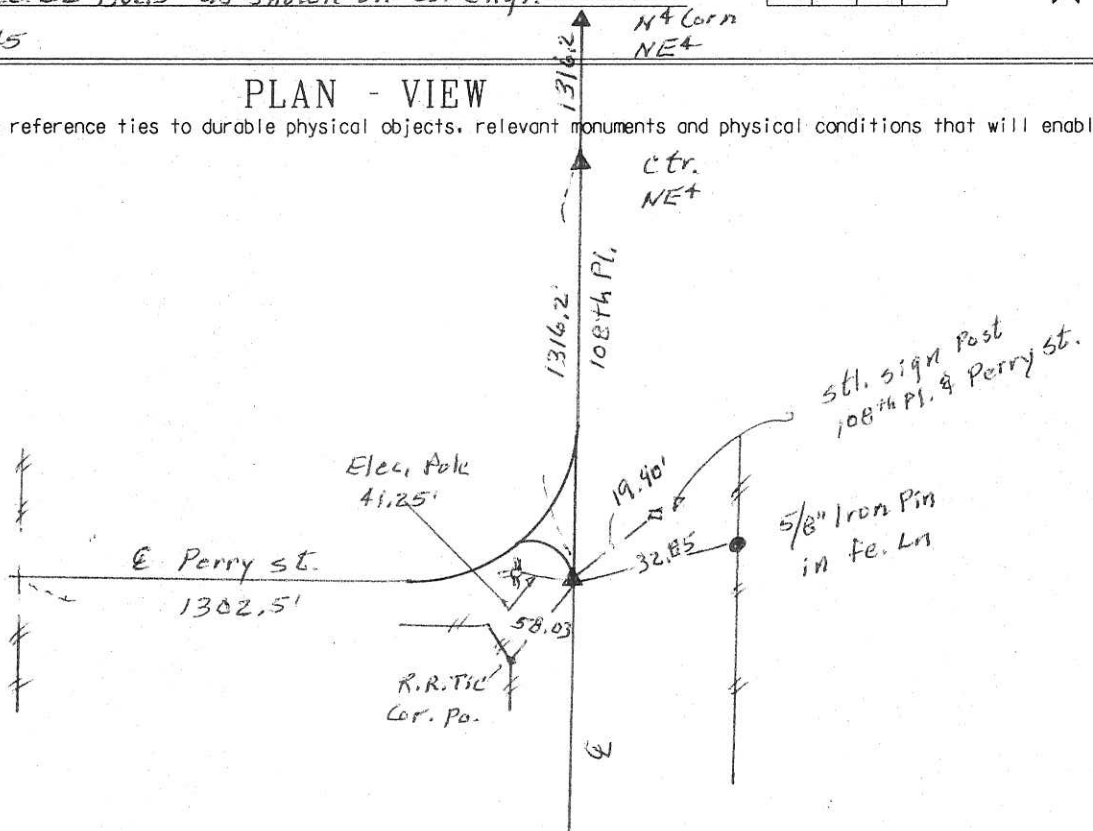
Monument Description and Remarks: Re-Established obliterated corner by doubling the dist. south of the N⁺ corner to the ctr. of the NE⁺, to the S⁺ corner of the NE⁺ and measuring east of the N-S fences at the center of Sec. 22 1302.5 as shown on C. Engr.

Tie book, pg 45



PLAN - VIEW

(Show a minimum of three reference ties to durable physical objects, relevant monuments and physical conditions that will enable recovery of the corner.)



I hereby certify that the survey work was completed and this land surveying document was prepared by me or under my direct personal supervision and that I am a duly licensed land surveyor under the laws of the state of Iowa

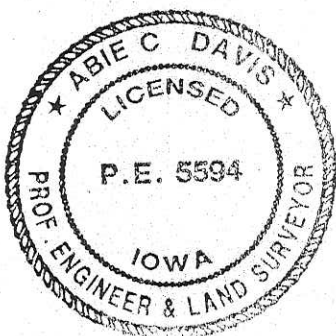
Signature: Abie C. Davis

Abie C. Davis, P.E. & L.S.

Date: 12/6/16 Reg. No. 5594

My license renewal date is December 31, 2017

SEAL



List Corners to be Indexed

Corners	Section	Twp	Range
SW Corn.	22	75N	20W
SE ⁺ NE ⁺			

N $\frac{1}{4}$ - S.E. $\frac{1}{4}$ Sec 22-75-20

45

