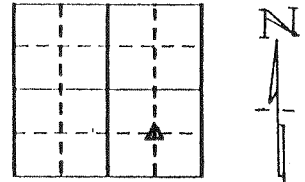


## UNITED STATES PUBLIC LAND SURVEY CORNER CERTIFICATE OF

Land Survey Monuments situated in Section 24, Township 75 N, Range 20 W, of the Fifth Principal Meridian, Marion County, Iowa.  
Previously recorded in N/A in County Recorder's Office.  
(book, page, document number, etc.)

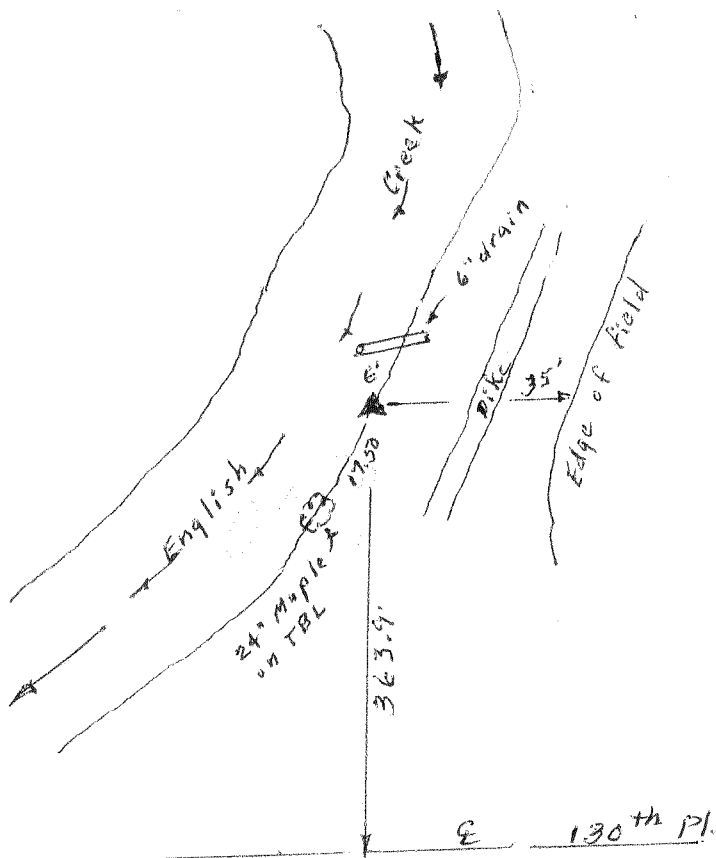
(Show reason for preparing this certificate, the evidence and detailed procedures used in establishing the corner positions and monumentation found or placed.)

Monument Description and Remarks: Found 5/8" Iron Pin  
with Alum. cap # 3754 on edge of TBL with  
18" high steel post 10 ft. south of pt.



### PLAN - VIEW

(Show a minimum of three reference ties to durable physical objects, relevant monuments and physical conditions that will enable recovery of the corner.)



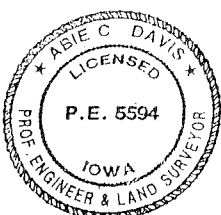
I hereby certify that the survey work was completed and this land surveying document was prepared by me or under my direct personal supervision and that I am a duly licensed land surveyor under the laws of the state of Iowa

Signature: Abie C Davis  
Abie C. Davis, P.E. & L.S.

Date: 4/17/14 Reg. No. 5594

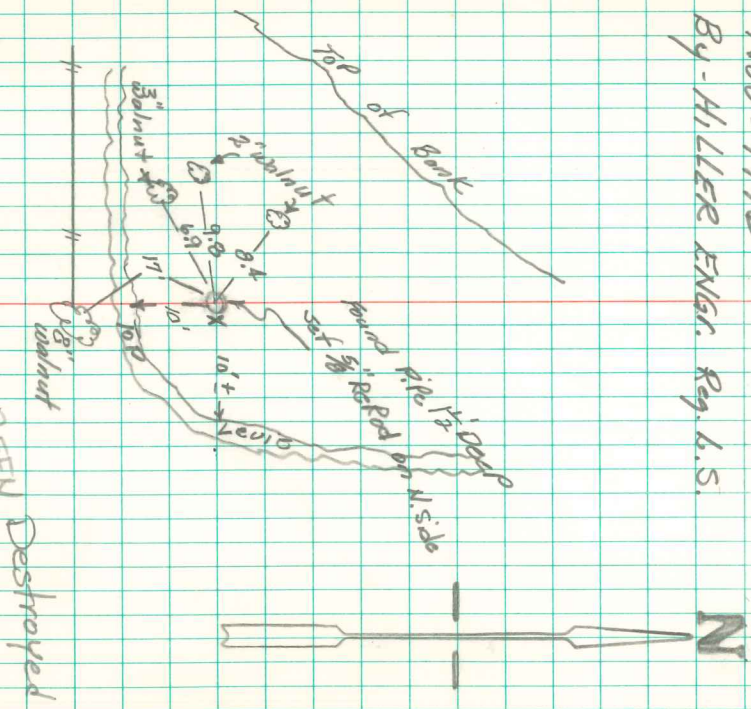
My license renewal date is December 31, 2015

SEAL



List Corners to be Indexed			
Corners	Section	Twp	Range
ctr. SEA	24	75N	19W

Center 58.1 Sec 24-75-20  
Found Pipe 15" Deep  
Nov-1976  
By - H. LER ENGR. Reg. L.S.



THIS CORNER HAS BEEN DESTROYED  
NOT RE-SET  
Abie DAVIS  
11/28/57  
SE