

Prepared by Abie C. Davis, P.E. & L.S., 1428 Oregon St., Knoxville, IA 50138

(641) 842-5863

UNITED STATES PUBLIC LAND SURVEY CORNER CERTIFICATE OF

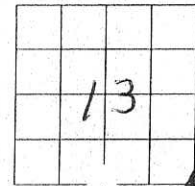
Land survey Monuments situated in Section 13, Township 75N, Range 20W, of the Fifth Principal Meridian, Marion County, Iowa.

Previously recorded in Book 2, Page 135 in County Recorders Office.

(book, page, document number, etc.)
Show reason for preparing this certificate, the evidence and detailed procedures used in establishing the corner positions and monumentation found or placed

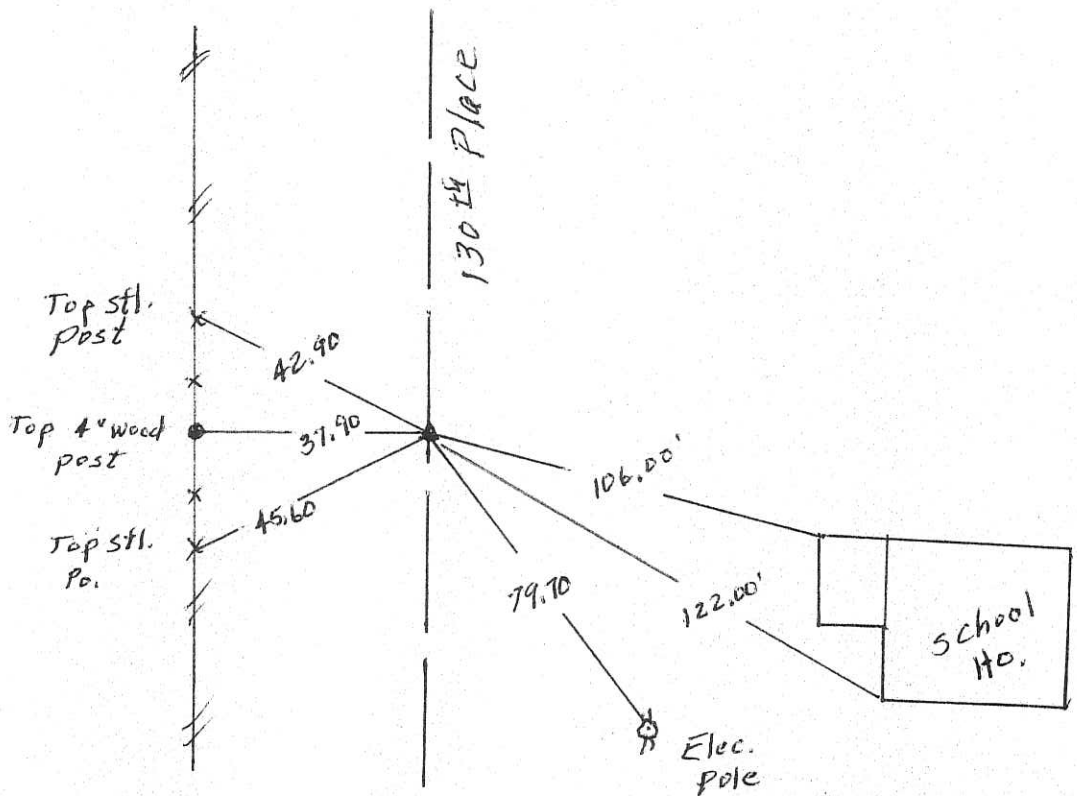
Monument Description and Remarks:

End conc Mon. set 5/8" Iron Pin over CM,
Set out new ties



PLAN - VIEW

(Show a minimum of three reference ties to durable physical objects, relevant monuments and physical conditions that will enable recovery of the corner.)



I hereby certify that the survey work was completed and this land surveying document was prepared by me or under my direct personal supervision and that I am a duly licensed land surveyor under the laws of the state of Iowa

Signature: Abie C. Davis

Abie C. Davis, P.E. & L.S.

Date: 10/2/18 Reg. No. 5594

My license renewal date is December 31, 2019

SEAL



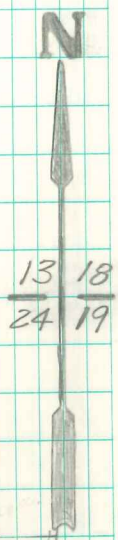
List Corners to be Indexed

| Corners | Section | Twp | Range |
|---------|---------|-----|-------|
| SE | 13 | 75N | 20W |

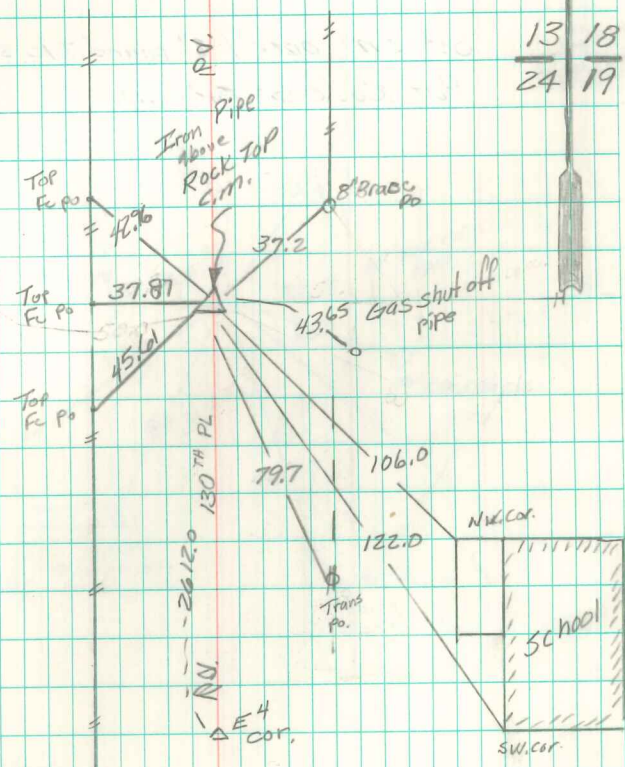
Found Lime Rock 18"x4"x4" over
2-2" round tile

Set C.M. over 1-2" round tile &
Put Rock on Top C.M.

N.E. Cor 24-75-20
Set- 10-27-41
Notes: Kennedy
Party: Wells, Luther



| | |
|----|----|
| 13 | 18 |
| 24 | 19 |



STONE 12" deep
iron pipe along side for
recovery purposes only
Craig R. Johnson 4/27/2000
Abie Davis 8/9/05

Found & Retied 10/31/1990
Progan, Quick, Lunde Kee