

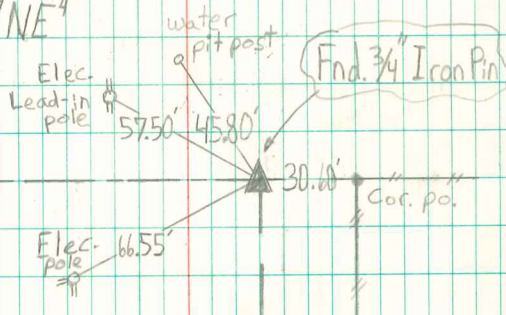
E Road Alignment P.I.

Sec. 2-75-20

NW corn. of the W. 762' of the
E. 858' of the So. 825' of
the SW⁴NE⁴



N



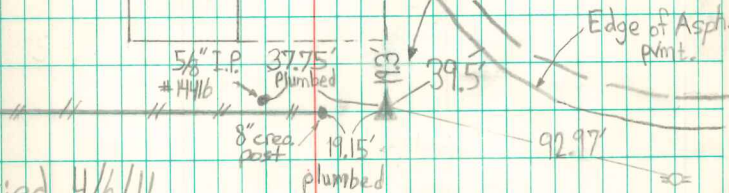
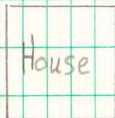
Retied 3/17/97

Abie Davis, Reg. no. 5594

SW corn. W 762' E 858' of
So. 825' SW⁴NE⁴

827.9'

Fnd. 5/8" Iron Pin
in 2" Iron Pipe
over Brick
L.S. #6585



Retied 4/6/11

Abie Davis, Reg. no. 5594