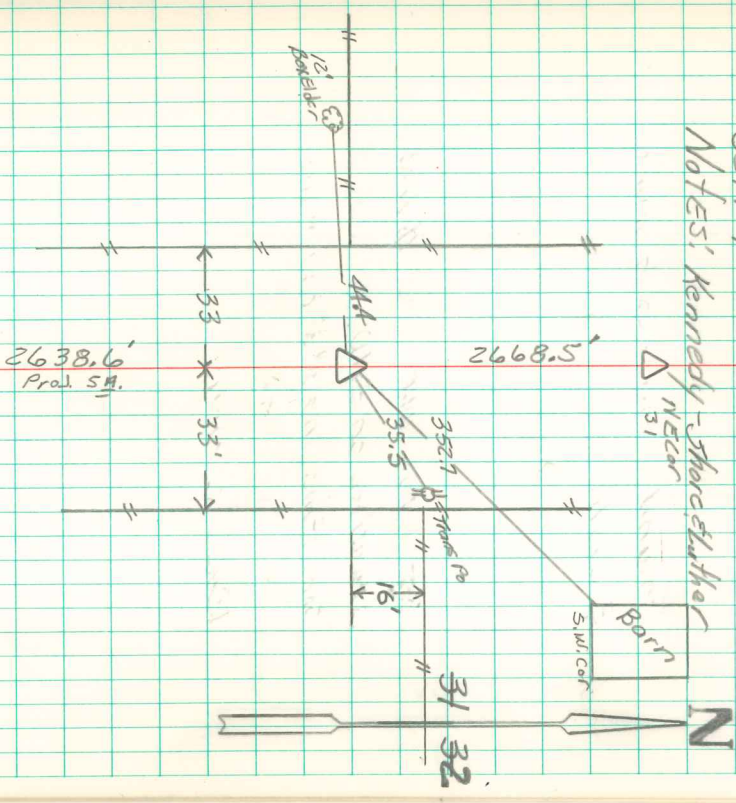


E 1/4 Cor Sec 31-75-20
 Sd. 7-30-41
 Notes: Kennedy - Shores et al. the



Found 2 Rocks one small
 Granite Rock 14"X8"X6" one lime
 Rock 14"X12"X18"
 5ft man over a 2" Horse Shoe tile
 standing on END.
 One Rock on N.W. Cor man
 one Rock on top man the top
 Rock 6" Deep