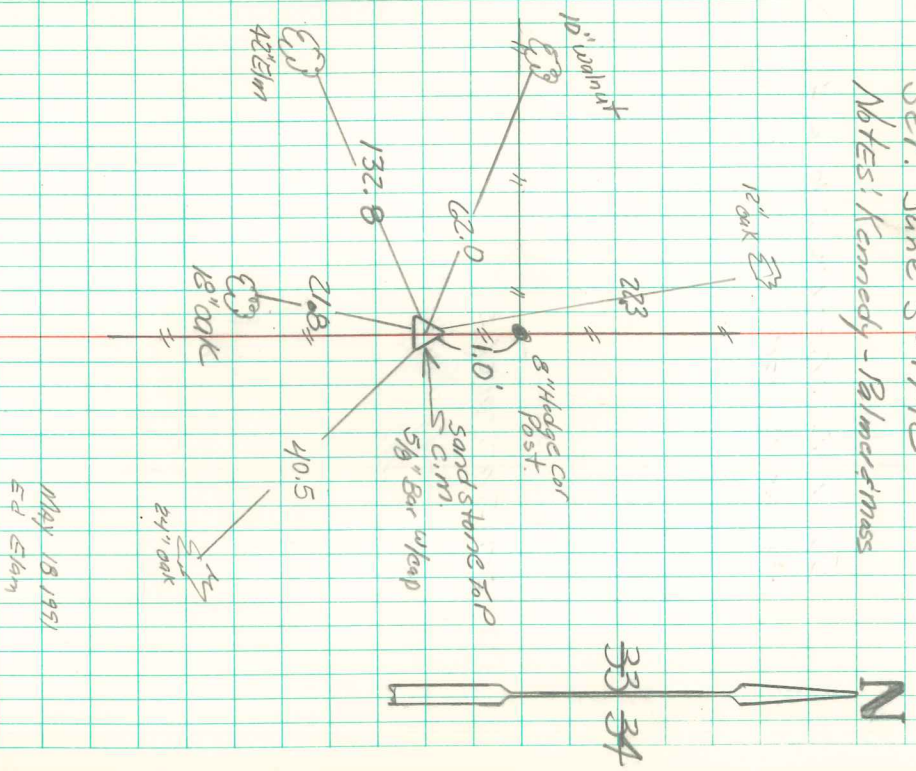


E 1/4 Cor Sec 33-75-20
Set. June 5-1942
Notes: Kennedy - Blomquist



May 18, 1951
E D Elam

Found Sandstone over 2-2\" Tile
on Fence line

Set C.M. over 1-2\" Tile located
in Place, Put the Sandstone
on top of C.M.

62.0' E. of 10\" Walnut tree in R. Line
132.8' N.E. of 42\" Elm Tree
21.8' N. of 18\" Oak "
1.0' South of 8\" Hedge Cor. Post