

## UNITED STATES PUBLIC LAND SURVEY CORNER CERTIFICATE

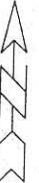
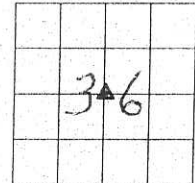
OF

Land survey Monuments situated in Section 36, Township 75 N, Range 20 W, of the Fifth Principal Meridian, Marion County, Iowa.

Previously recorded in N/A in County Recorders Office.

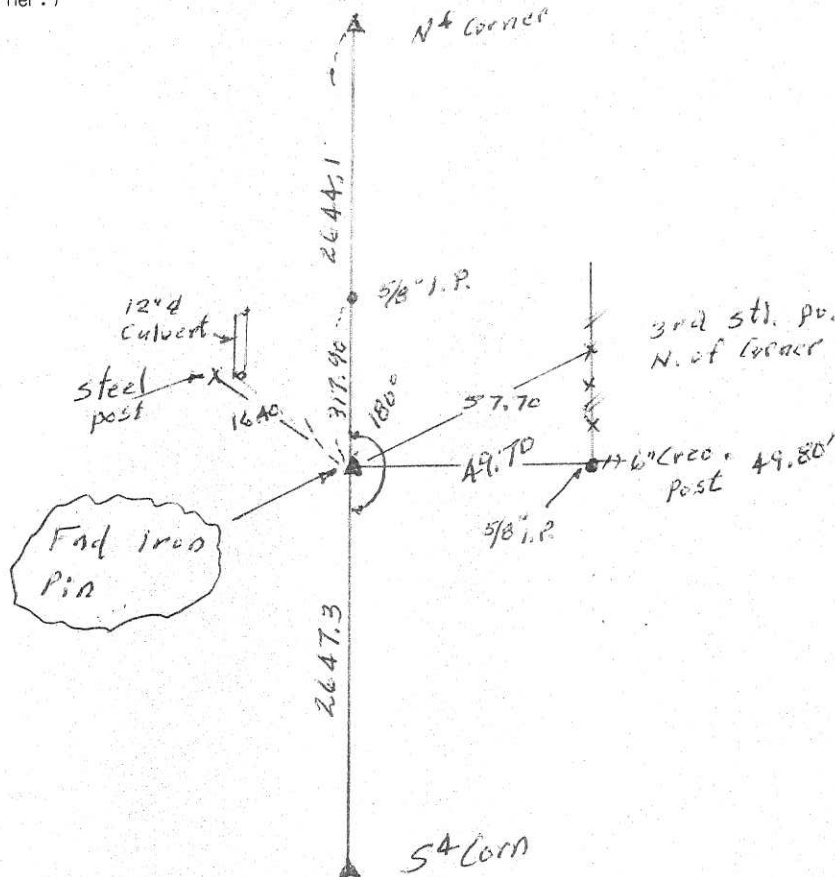
Show reason for preparing this certificate, the evidence and detailed procedures used in establishing the corner positions and monumentation found or placed

Monument Description and Remarks: End 5/8" Iron Pin  
1' deep in W. shoulder of road



### PLAN - VIEW

(Show a minimum of three reference ties to durable physical objects, relevant monuments and physical conditions that will enable recovery of the corner.)



I hereby certify that the survey work was completed and this land surveying document was prepared by me or under my direct personal supervision and that I am a duly licensed land surveyor under the laws of the state of Iowa.

Signature: Abie C. Davis  
 Abie C. Davis, P.E. & L.S.

Date: 4/24/18 Reg. No. 5594

My license renewal date is December 31, 2019

SEAL



List Corners to be Indexed			
Corners	Section	Twp	Range
ctr.	36	75 N	20 W

CENTER 36 75-20

5/8" capped pin  
# 5594

5/8" capped pin  
# 7995

330.01

333.01

5/8" capped pin # 5574  
49.65

C.L. CO. HWY

Found & Letted

8/25/99 J. Brian Morrissey