

N.E. Cor. Sec 6-75-20

Set: 11-14-01

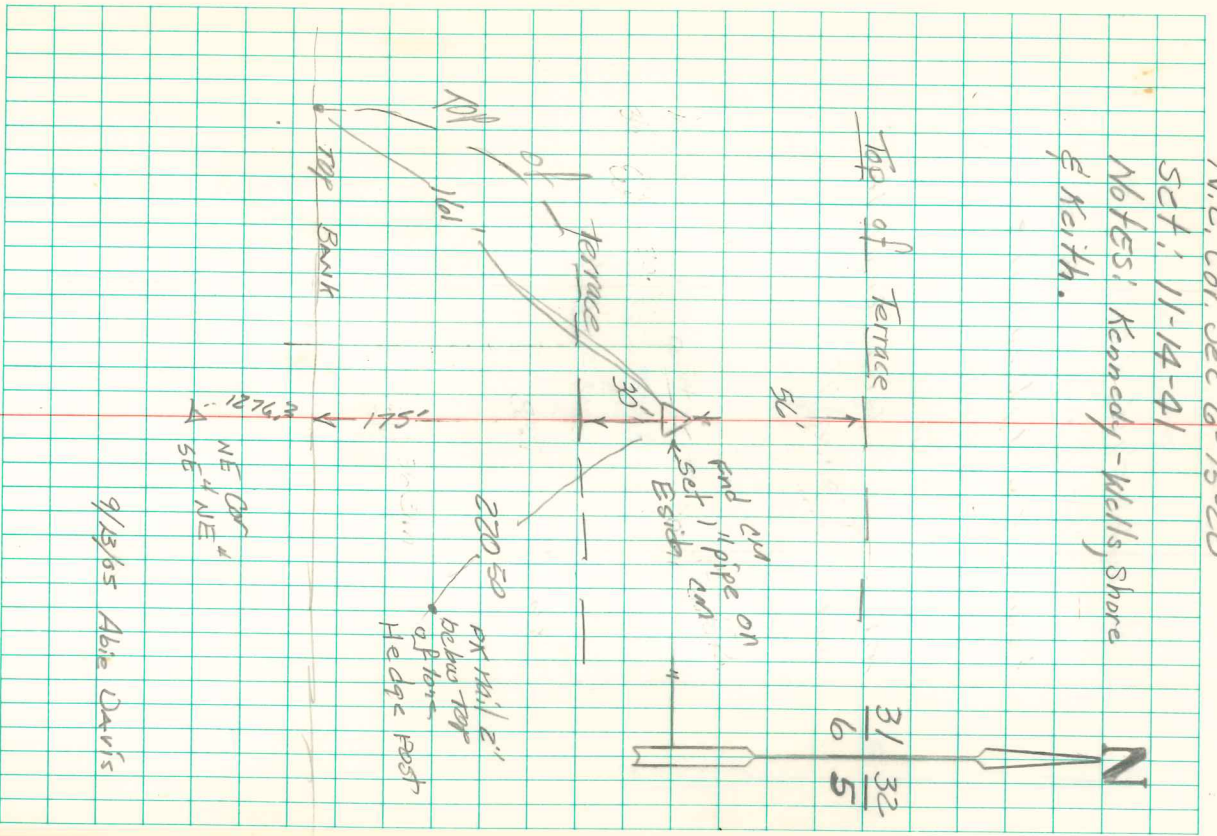
Notes: Kennedy-Wells, Shore
of Keith.

Found 2-2" Round Tile

Set man over 1-2" Round Tile
Lowered in Place.

Put a Granit bolder 15'x9'x7"
on top man.

8.4'	W.	of 8" Locust Gate A
8.4'	E.	" Fence Going South
30.0'	E.	" 36" Cottonwood Tree
88.7'	N.	" 38" Elm "



9/13/05 Able Davis