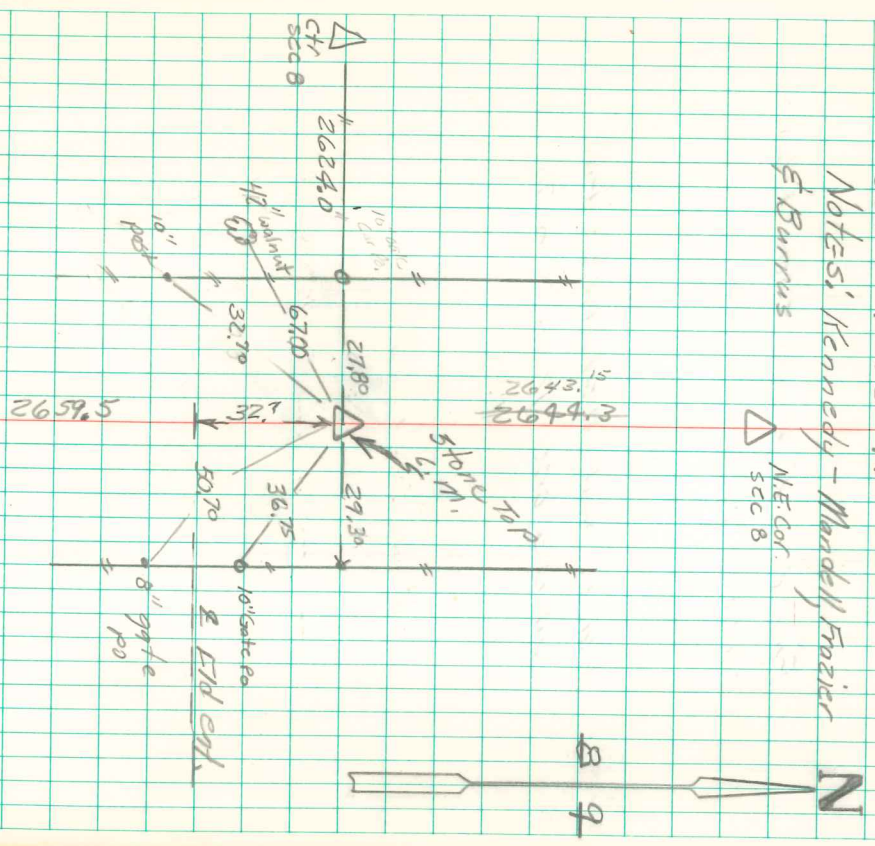
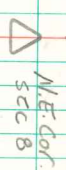


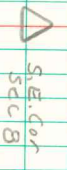
E/4 Cor Sec 8-75-20
 Spt: 9-16-41

Notes: Kennedy - Mandell Frazier

E Burrows



and painted stone 2" deep
 over an 14" deep Rained
 stone. Set 5/8" iron pin
 4" deep # 5594 on N. side
 an 4" deep.



Abner Davis 5/21/41

Dug hole 5'x8'x3' deep on Measurements
 From S.N. & W. and in center of 56'
 Highway. Found No evidence of Cor,
 but found a yellow sandstone on
 West fence line shattered into
 many small pieces which had
 evidently been thrown out by
 road workers, when grade was cut down.

Established corner by local evidence

5' measure mnts, set c.m. over 1-2' O.Tile

5' shattered yellow sandstone, with

2" x 6" x 12" painted lime stone over c.m.