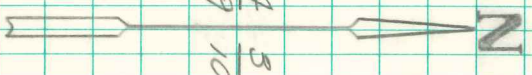
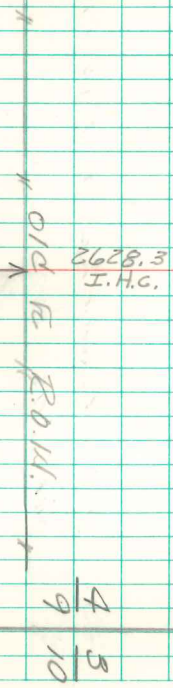


NE Cor Sec 9-75-20

SET = APRIL-13-1942

Notes: Kennedy - Wells

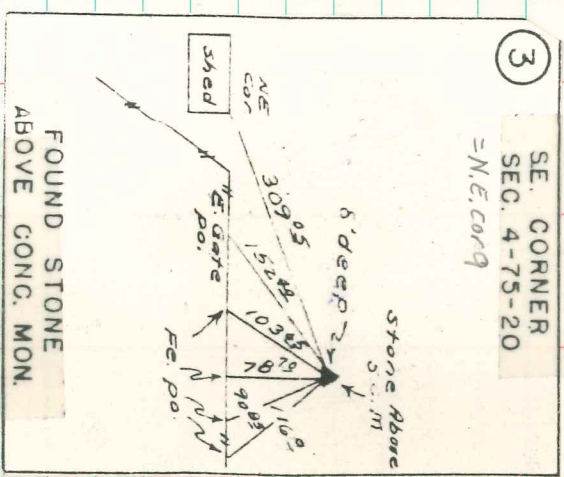
Water Sec 8



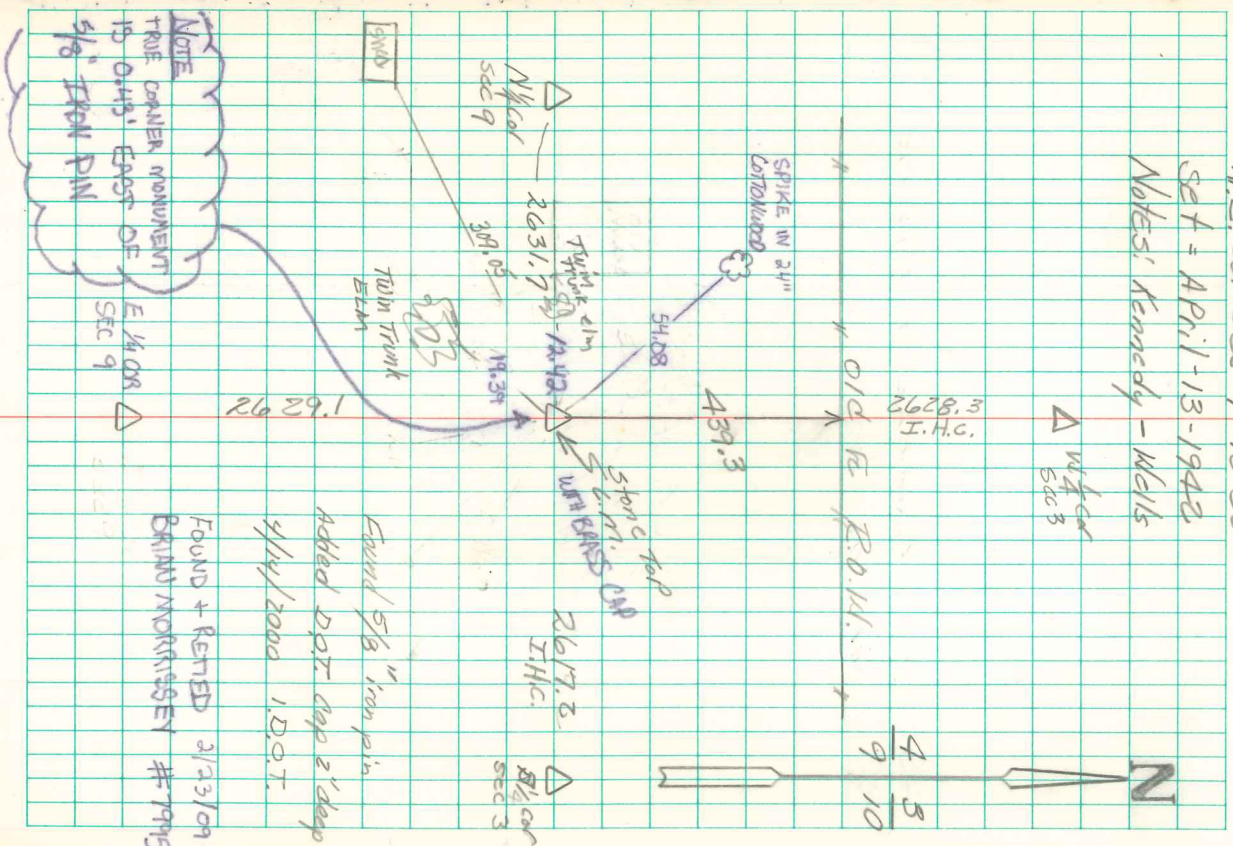
Found 3-3" Drain Tile

Set C.M. over 1-3" Drain Tile
Lowered in Place.

Put a Sandstone 12"x8"x4" on
TOP C.M.



FOUND STONE
ABOVE CONG. MON.



NOTE
TRUE CORNER MONUMENT
10' 0\"/>

FOUND + RESET 2/23/09
BRANT MORRISSEY #79915

Found 5/8" Iron pin
Added D.O.T. cap 2' deep
3/14/2000 I.D.O.T.

2617.3
I.H.C.
NE COR
SEC 8