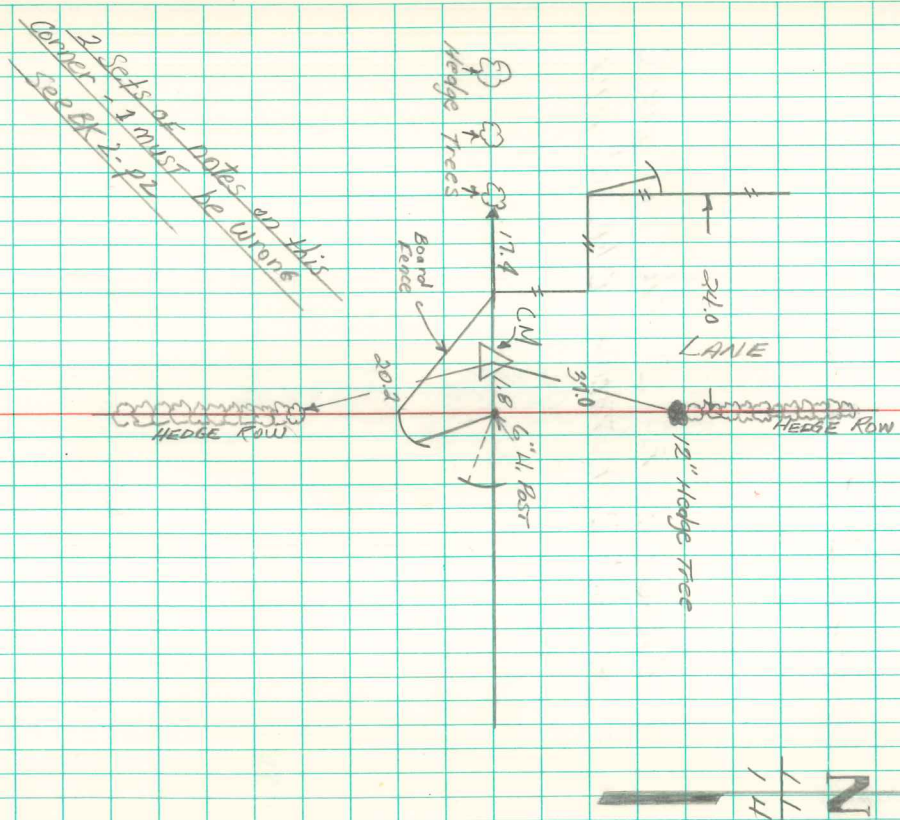


Found 2-2" O TILE

Lowered 1-2" tile in place
& Set CM Top of CM 12" deep.

N 1/4 Cor 14-95-21

SET 5-2-40 (Clear Windy)
Kennedy, DODD, Shore, Russell
DRAE, NOTES - WISNAP 11



Found Lime Rock 15" x 8" x 8"
right where we set c.m.

Set c.m. over 1-2" Drile standing
on END.

Lime Rock TOP c.m.

N $\frac{1}{2}$ Cor. 14-75-21
Set 9-17-21
Notes - Kennedy
Party - Wells, Glass

