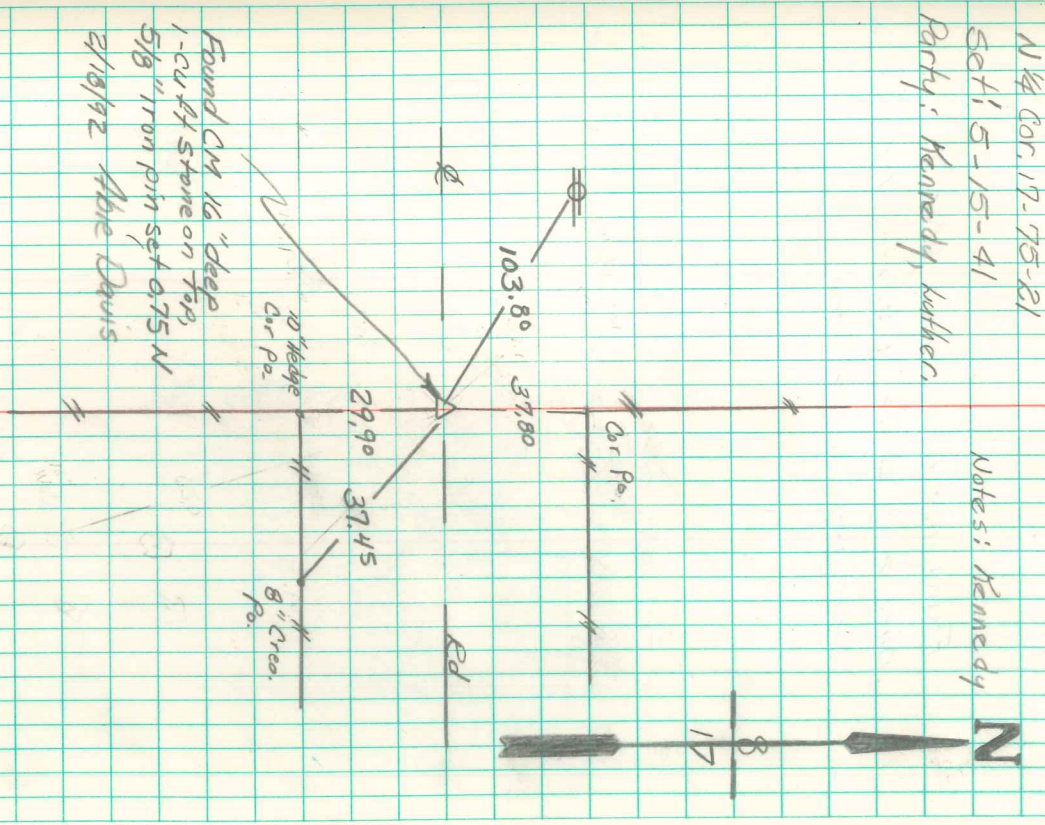


N 1/4 Cor. 17-75-81  
Set 1' 5-15-41  
Party: Kennedy, Kuther

Notes: Kennedy



Found CM 1/2" deep  
1-24 ft stone on top,  
5/8" iron pin set 0.75 N  
2/18/92 Able Davis

Found 1/2-3" tile filled with  
concrete over large granit rock  
over 2-2" A tile (Sharkins tile)  
Right where we set mon.

Set mon. over 1-2" A tile  
lowered in place. Top mon.  
1/2" under surface. 3" 1/2 tile  
at base mon, rock on top mon.