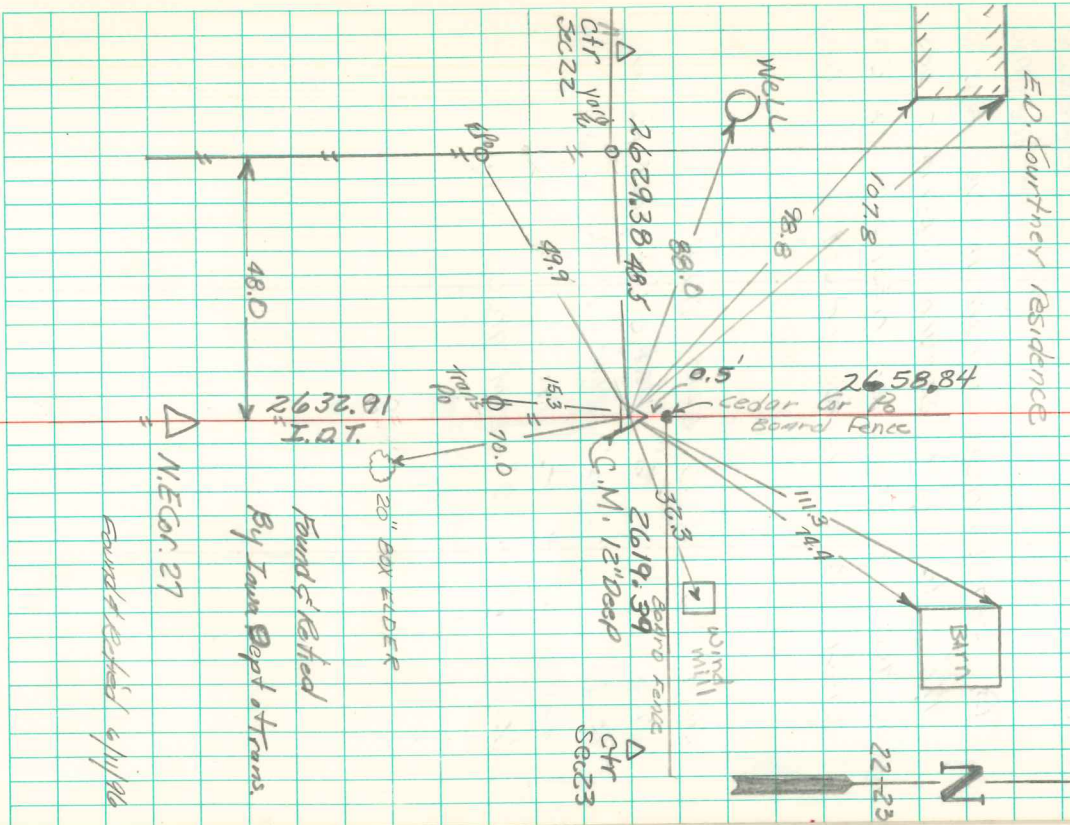


Found Sand Stone 8"x8" over 2-2 1/2" Round TILE.

Set Concrete Monument over 1-TILE in its original up-right position. Placed stone on top of cm. Point above surface of Ground. CM 12" below surface.

- 48.0 NE of Post SE Cor yard Fe.
- 88.0 S.E. of center of Well
- 98.8 " " SE Cor Gurney Residence
- 107.8 " " NE " "
- 11.3 SW " " NW Cor of Barn
- 24.4 " " SW " "
- 31.9 " " Center of Wind Mill
- 70.0 NW " " 20" Box Elder
- 2.3 South of 8" Cedar Cor Post

E 1/4 Cor 22 T-75N R-21W
 SET 4-26-40 (CLEAR) SKETCH BY
 KENNEDY & PARTY. WITNESS 11



Found & marked
 By Town Dept of Trans.
 Found & marked 4/11/96