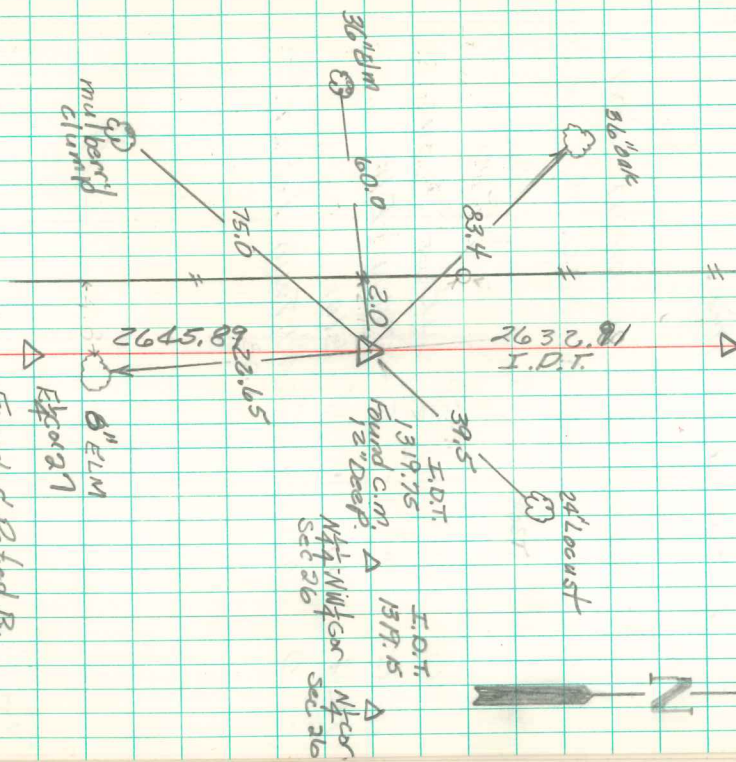


NE Cor 27 T. 25N R. 21W

Set 4-26-40 (clear)
By Howard Kennedy
Lawrence Dodson
Lean Shore
Al Eddingose

Sketch by
Wishmull

W 1/2 Cor 23
I.D.T.
2632.81
24' lowest
39.5
I.D.T.
1319.75
Found Cor.
12" Deep
N 1/4 NW 1/4 Cor
Sec 26
N 1/2 Cor
Sec 26



Found & Re-rod by
Iowa Dept of Trans.
5/8" Iron Pin on South
side Abie Davis 6/19/90

Found 2 - Sandstone 18" x 7" x 3" - 18" x 7" x 4"
(This stone had the Figure 23 chiseled on
The side of it) = 2-1 1/2" horseshoe tile.
SET Concrete Monument over one
1 1/2" tile in its original up-right pos.
placed 1-stone on West Side of CM
other Stone on top of CM protruding
from surface of ground.

- 36.4 SE OF 10" ELM TREE
- 7.6 " " 6" Hedge Cor post E.W.
- 20.1 " " 6" ELM TREE
- 2.4 EAST " E N.E.S.
- 80.1 NW " 9" ELM TREE