

## UNITED STATES PUBLIC LAND SURVEY CORNER CERTIFICATE

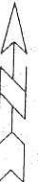
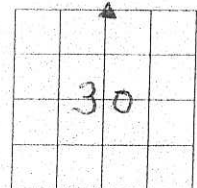
OF

Land survey Monuments situated in Section 30, Township 75N, Range 21W, of the Fifth Principal Meridian, Marion County, Iowa.

Previously recorded in N/A in County Recorders Office.

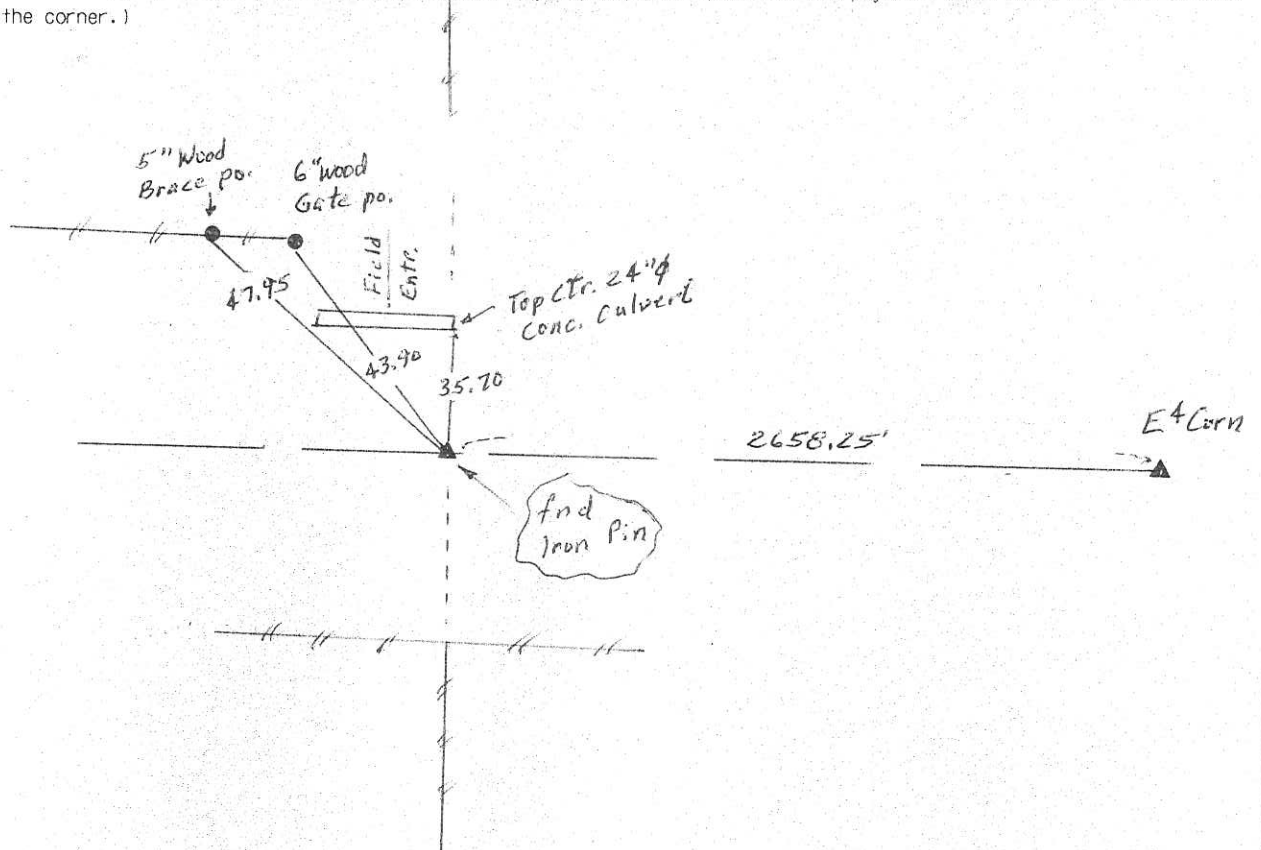
Show reason for preparing this certificate, the evidence and detailed procedures used in establishing the corner positions and monumentation found or placed

Monument Description and Remarks: Find Iron Pin  
set in 1951 on road construction project  
52195(1)



### PLAN - VIEW

(Show a minimum of three reference ties to durable physical objects, relevant monuments and physical conditions that will enable recovery of the corner.)



I hereby certify that the survey work was completed and this land surveying document was prepared by me or under my direct personal supervision and that I am a duly licensed land surveyor under the laws of the state of Iowa

Signature: Abie C Davis

Abie C. Davis, P.E. & L.S.

Date: 3/25/19 Reg. No. 5594

My license renewal date is December 31, 2019

SEAL



List Corners to be Indexed

Corners	Section	Twp	Range
NW Corn	30	75N	21W
NE 4	30	75N	21W