

Instr. Number: 23-124
 BK: 2023 PG: 124
 Recorded: 1/10/2023 at 8:47:13.0 AM
 County Recording Fee: \$7.00
 Iowa E-Filing Fee: \$3.13
 Combined Fee: \$10.13
 Revenue Tax:
 NAOMI ELLIS, RECORDER
 Marion County, Iowa

RETURN TO: ross LAND SURVEYING, inc. PO Box 336 Johnston, Iowa 50131 515-254-2567

UNITED STATES PUBLIC LAND SURVEY CORNER CERTIFICATE OF

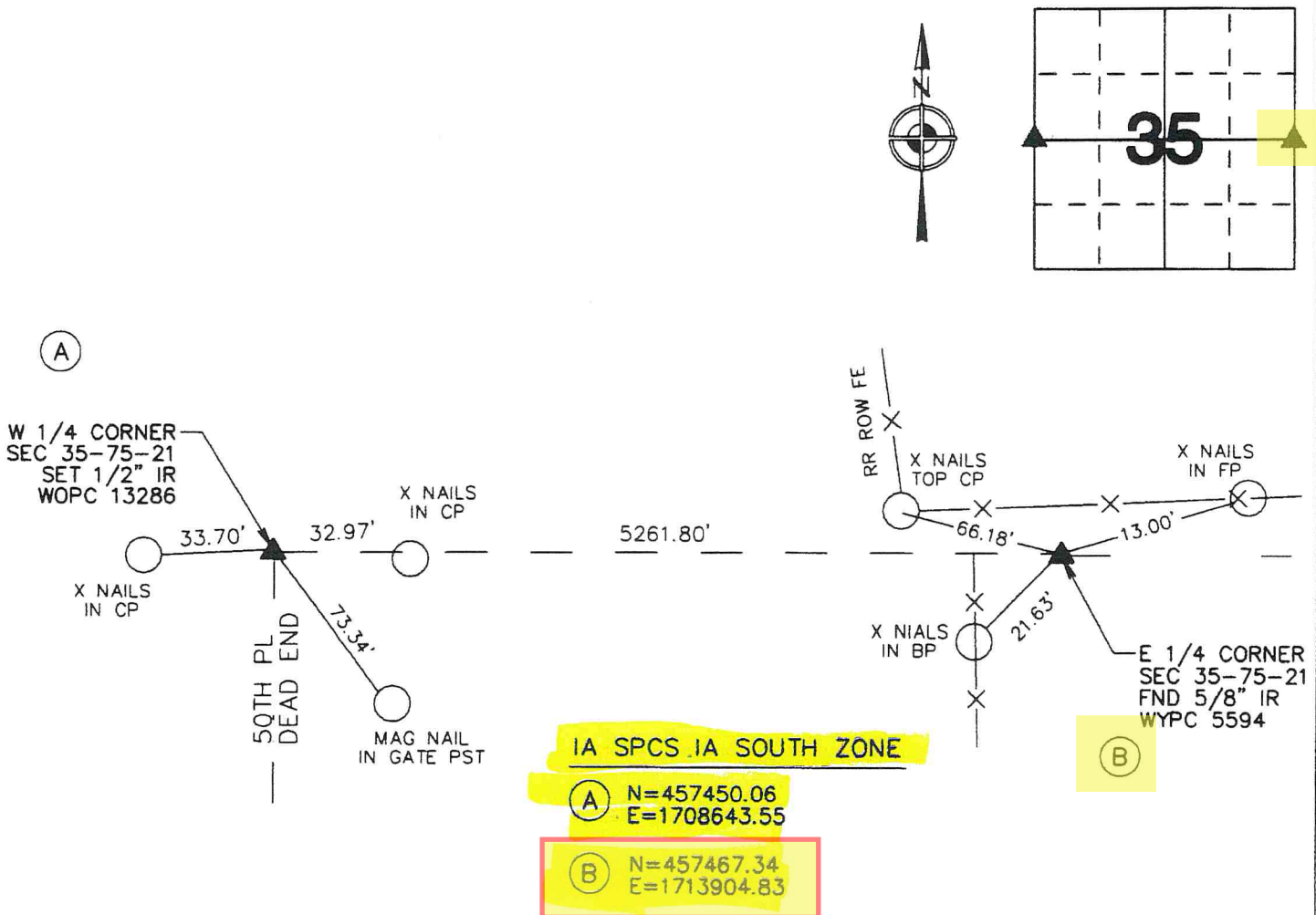
Land survey monuments situated in Section 35, Township 75, Range 21
 of the Fifth Principal Meridian, MARION County, Iowa. NO Certificate on record.

MONUMENT DESCRIPTION AND REMARKS:

SECTION CORNERS WERE USED TO ESTABLISH A NEW LAND DIVISION IN SAID SECTION 35

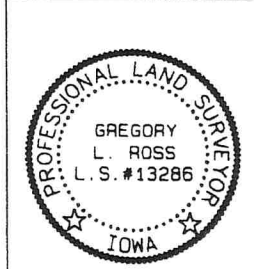
- A. WEST 1/4 COR OF SAID SECTION 35, ESTABLISHED FROM ENGINEERS OFFICE FIELD NOTE AND REMAINING TIES. CORNER HAD BEEN REMOVED. SET 1/2" IR WITH YELLOW PLASTIC CAP STAMPED PLS 13286.
- B. EAST 1/4 CORNER OF SAID SECTION 35, FOUND 5/8" IR WITH YELLOW PLASTIC CAP. USED EXISTING TIES AND REMEASURED

PLAN - VIEW



IA SPCS IA SOUTH ZONE

(A) N=457450.06
 E=1708643.55
 (B) N=457467.34
 E=1713904.83



I HEREBY CERTIFY THAT THIS LAND SURVEYING DOCUMENT WAS PREPARED AND THE RELATED SURVEY WORK WAS PERFORMED BY ME OR UNDER MY DIRECT SUPERVISION AND THAT I AM A DULY LICENSED PROFESSIONAL LAND SURVEYOR UNDER THE LAWS OF THE STATE OF IOWA.

Signed: *[Signature]* Date: 1/9/23

GREGORY L. ROSS Iowa Reg. No. 13286
 My license renewal date is December 31, 2024

CORNER TO BE INDEXED			
Corner	Sec	Twp.	Range
W 1/4	35	75	21
E 1/4	35	75	21

JOB # 7982

Retied 11-3-71

C.M. Top Broken off 3"x6"x8"
Limestone on top of C.M. 18" deep

Found 1 Limestone 8"x8"x6"
1-Sandstone 14"x10"x6" and
2-1 1/2" □ tile

Set C.M. over 1 1/2" □ tile. Sandstone
on top and limestone on N.S.

FOUND BY IDOT 1976
BROKEN CONC. MAR. 18" DEEP

E 1/4 Cor 35-75-21

Set 5-1-40

Draw notes by S. WIGWALL

