

KAREN SCHWANEBECK, RECORDER
MARION COUNTY IOWA

Prepared by: Abie C. Davis, P.E. & L.S., 1428 Oregon St., Knoxville, Iowa 50138 Phone: (515) 842-5863

UNITED STATES PUBLIC LAND SURVEY CORNER CERTIFICATE

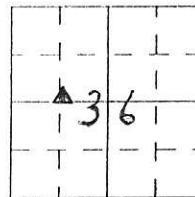
SLS19-94

Land survey Monuments situated in Section 36, Township 75 N, Range Z1W, of the Fifth Principal Meridian, Marion County, Iowa.

Previously recorded in N/A in County Recorders Office.

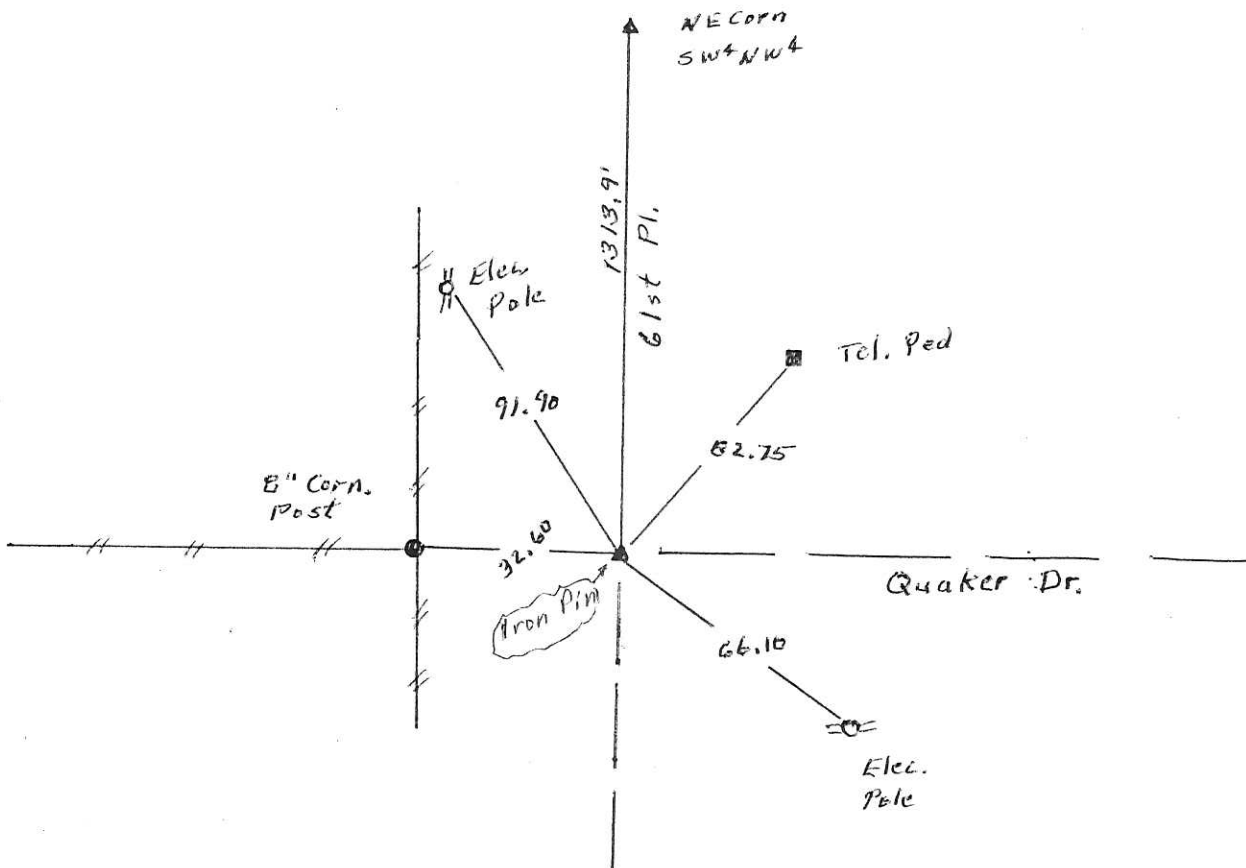
Show reason for preparing this certificate, the evidence and detailed procedures used in establishing the corner positions and monumentation found or placed

Monument Description and Remarks: Found Iron Pin
set by L.S. 3754 Feb. 19, 1987. set out
new ties.



PLAN - VIEW

(Show a minimum of three reference ties to durable physical objects, relevant monuments and physical conditions that will enable recovery of the corner.)



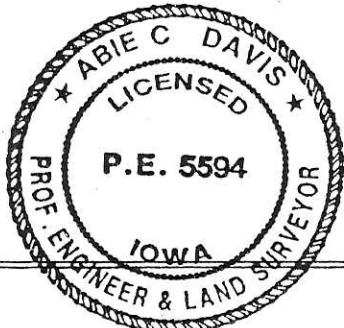
I hereby certify that the survey work was completed and this land surveying document was prepared by me or under my direct personal supervision and that I am a duly licensed land surveyor under the laws of the state of Iowa

Signature: Abie C. Davis
Abie C. Davis, P.E. & L.S.

Date: 8/24/16 Reg. No. 5594

My license renewal date is December 31, 2017

SEAL



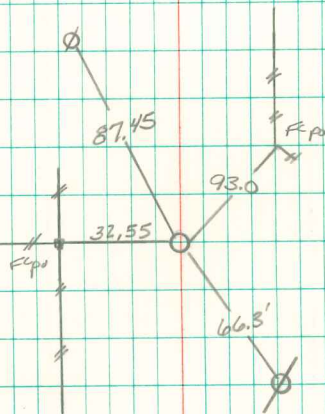
List Corners to be Indexed			
Corners	Section	Twp	Range
SE Corn SW+NW4	36	75N	Z1W

Pd. \$700 Cash - Ret Abie Davis

Set PIN IN LINE WITH
FENCE WEST AND 33' FROM
W. R-O-W FENCE.

SW COR. SE¹/₄, NW¹/₄ SEC 36-75.21

68



Set BY DAVE HILLER
IOWA REG. NO. 3754
FEB. 19, 1987